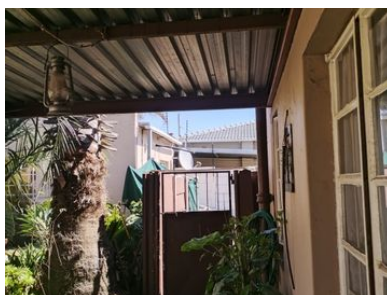




4 2 0



Charming Family Home in Wentworth Park, Krugersdorp

Spacious Family Home with Income-Generating Flatlet – R1,180,000

Location: Wentworth Park, Krugersdorp

This charming, pet-friendly property offers the perfect blend of comfort, convenience, and versatility — ideal for families or savvy investors.

 Main House Features:

- 3 generously sized bedrooms
- 2 full bathrooms
- Welcoming lounge and dining room
- Well-appointed kitchen
- Front and back doors with a cozy porch
- Level garden perfect for kids and pets

Monthly Bond Repayment

Calculated over 20 years at 10.75%
with no deposit.

R11,979.70

Bond Costs

These calculations are only a guide. Please ask
your conveyancer for exact calculations

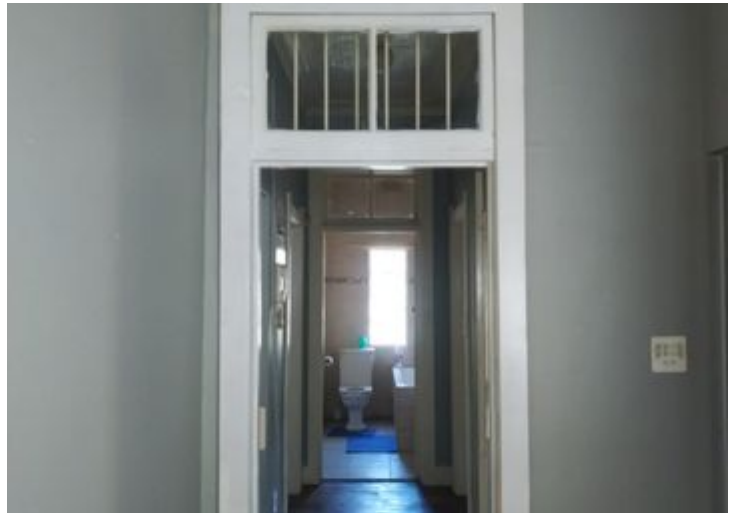
R25,220.00

Transfer Costs

R32,749.00

Monthly Rates

R1,120



INTERIOR

Bedrooms	4
Bathrooms	2
Kitchens	1
Recep. Rooms	2
Furnished	Yes

EXTERIOR

Carports / Parkings	4
Security	Yes
Dom. Accom.	0
Pool	Yes
Views	Yes

SIZES

Floor Size	-
Land Size	739m ²



Rainy Hunt
Property Practitioner

079 942 6915
rainy@finehome.co.za