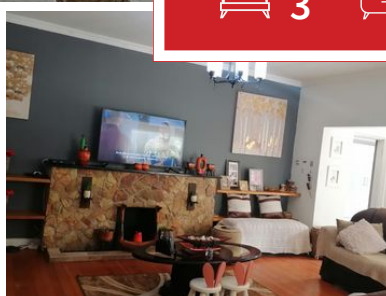


3 2 4



Charming Family Home in a Stylish Setting

Welcome to your dream family home! This beautiful residence combines elegance with comfort, featuring spacious living areas that are perfect for both relaxation and entertaining. Enjoy a modern kitchen equipped with high-end appliances, and a cozy family room that invites gatherings.

The outdoor space is equally stunning, with a landscaped garden ideal for children to play or for hosting summer barbecues. Located in a friendly neighborhood, this home offers easy access to schools, parks, and shopping.

Don't miss the opportunity to make this stylish haven your own

Monthly Bond Repayment

Calculated over 20 years at 10.75% with no deposit.

R20,812.19

Bond Costs

These calculations are only a guide. Please ask your conveyancer for exact calculations

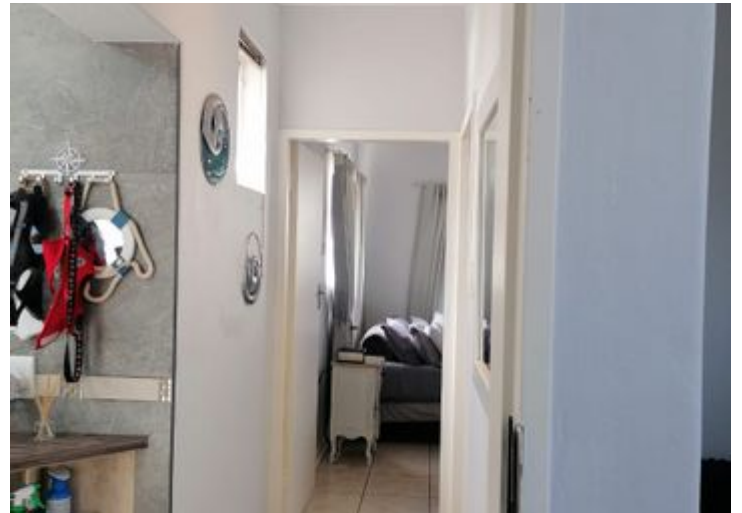
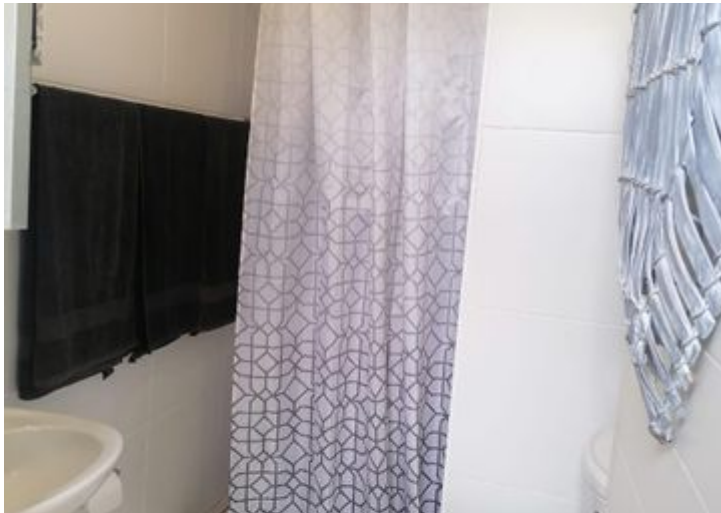
R34,625.00

Transfer Costs

R80,947.00

Monthly Rates

R1,420



INTERIOR

Bedrooms	3
Bathrooms	2
Kitchens	1
Recep. Rooms	2
Furnished	Yes

EXTERIOR

Carports / Parkings	4
Security	Yes
Dom. Accom.	1
Pool	Yes
Views	Yes

SIZES

Floor Size	283m ²
Land Size	1,115m ²



Pumla Ndabeni
Candidate Property Practitioner

076 400 1569
pumla@finehome.co.za