



5 3.5 2



Exquisite 5-Bedroom Home in the Prestigious Eye of Africa Golf & Residential Estate

Nestled in the heart of the exclusive Eye of Africa Estate, this luxurious 5-bedroom residence offers an exceptional lifestyle defined by comfort, elegance, and world-class amenities. Designed for both family living and entertaining, this home combines generous proportions with sophisticated finishes, all set within one of South Africa's most sought-after golf and lifestyle estates.

Step inside to discover expansive living areas, high ceilings, and seamless indoor-outdoor flow. The gourmet kitchen, outfitted with top-of-the-line appliances, anchors the heart of the home, while each of the five bedrooms provides privacy, style, and ample natural light. The master suite is a true sanctuary, complete with a walk-in closet and spa-like en-suite bathroom.

Outside, enjoy beautifully landscaped gardens and multiple entertainment areas perfect for alfresco dining or sunset

Village & Residents Club with lagoon pool, kids club, café, and braai facilities

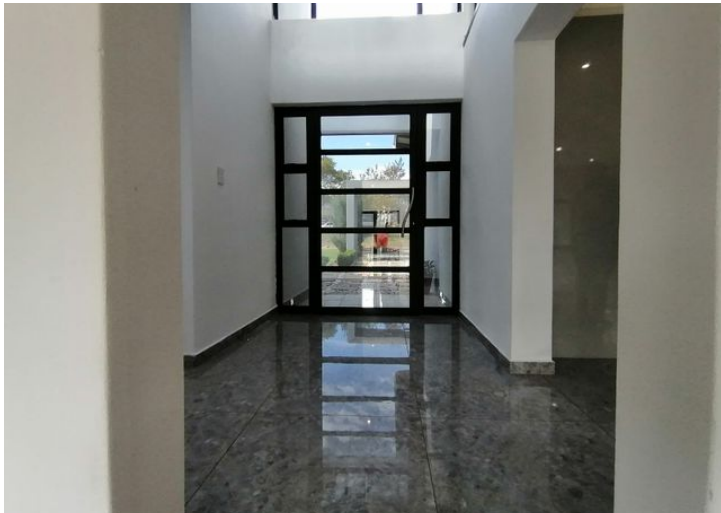
Two on-site restaurants: Doppio Zero and The Green Grillhouse

There is also a private school nearby.

This is more than a home—it's a lifestyle. Whether you're an avid golfer, fitness enthusiast, nature lover, or someone who simply appreciates luxury living in a secure, family-friendly environment, this property offers it all.

Live where luxury meets lifestyle. Contact us today to arrange a private viewing.

Monthly Bond Repayment	R46,700.53	Bond Costs	R57,265.00
Calculated over 20 years at 10.75% with no deposit.		These calculations are only a guide. Please ask your conveyancer for exact calculations	
Transfer Costs	R354,009.00	Monthly Rates	-



INTERIOR

Bedrooms	5
Bathrooms	3.5
Kitchens	1
Recep. Rooms	3
Furnished	Yes

EXTERIOR

Carports / Parkings	4
Security	Yes
Dom. Accom.	0
Pool	Yes
Views	Yes

SIZES

Floor Size	-
Land Size	807m ²



Nonny Sindane

Broker Manager

Registered with PPRA (FFC 1166966)

060 417 5636

nonny@finehome.co.za