

2 1 0



2 Bedroom Townhouse To Let in Tasbet Park Ext 1

HOUSE TO RENT IN TASBET PARK X1

Located in the South View Complex, perfectly situated close to a primary school and a shopping complex for your everyday needs.

This property is ideal for a small family.

Features: 2 bedrooms, 1 bathroom, open-plan kitchen with living area, and 1 carport.

Prepaid electricity.

Water included.

Available 1 June 2025.

Monthly Bond Repayment

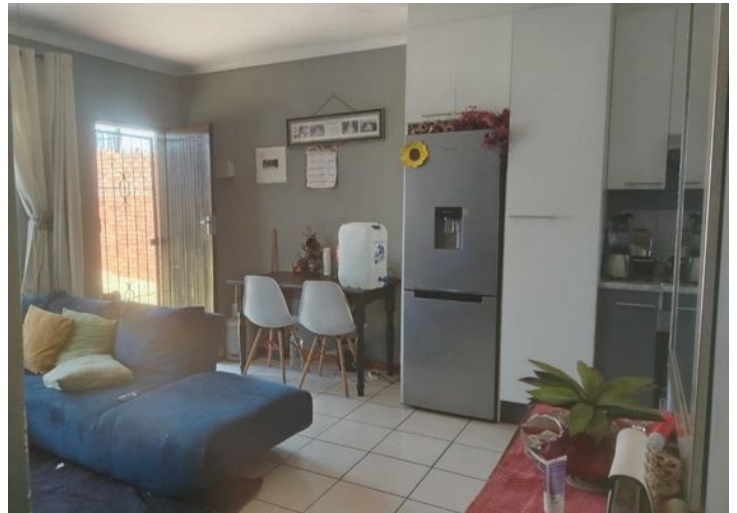
Calculated over 20 years at 10.75%
with no deposit.

Bond Costs

These calculations are only a guide. Please ask
your conveyancer for exact calculations

Transfer Costs

Monthly Rates



INTERIOR

Bedrooms	2
Bathrooms	1
Kitchens	1
Recep. Rooms	1
Furnished	Yes

EXTERIOR

Carports / Parkings	1
Security	Yes
Dom. Accom.	0
Pool	Yes
Views	Yes

SIZES

Floor Size	-
Land Size	-



Mariska Velloen

Broker Manager

Registered with PPRA (FFC 1193987)

083 228 0014

mariska@finehome.co.za