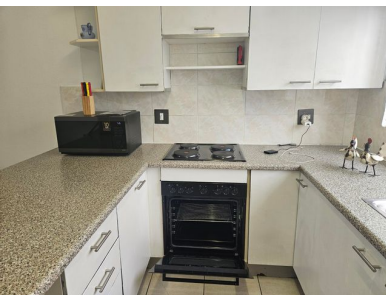


2 1 1



2 Bed, 1 Bath Renovated Townhouse in Weltevredenpark

Lovely renovated, Townhouse in popular Weltevredenpark.

This unit has a tranquil garden for relaxing after a long day.

If it is rainy or very cold there is a Covered Patio/Carport for entertainment and relaxing.

Enter Open plan Lounge, Dining and Kitchen.

Tiled through out.

Kitchen has a brand new Stove.

Space for your Washing Machine underneath the stairs.

Storage space as well.

Main Bedroom has more than enough Built In Cupboards.

Queen size bed can fit and it opens up to a lovely Balcony.

The second bedroom can fit a double bed.

Monthly Bond Repayment

Calculated over 20 years at 11%
with no deposit.

Bond Costs

These calculations are only a guide. Please ask
your conveyancer for exact calculations

Transfer Costs

Monthly Rates



INTERIOR

Bedrooms	2
Bathrooms	1
Kitchens	1
Recep. Rooms	1
Furnished	Yes

EXTERIOR

Carports / Parkings	2
Security	Yes
Dom. Accom.	0
Pool	Yes
Views	Yes

SIZES

Floor Size	-
Land Size	-



Chris Maritz

Broker Manager

071 350 4193

christo@finehome.co.za



Elmarie Potgieter

Agent

083 600 7037

elmarie@finehome.co.za