



 2  1  1



## 2-Bedroom Home to Let in Ennerdale

This cozy and well-maintained 2-bedroom home, located in the suburb of Ennerdale, offers the ideal blend of comfort, and accessibility. Whether you're a young family, couple, or individual looking for a quiet space with convenient amenities, this property is an excellent choice.

### Property Features:

2 Bedrooms with built-in cupboards, offering plenty of storage space.

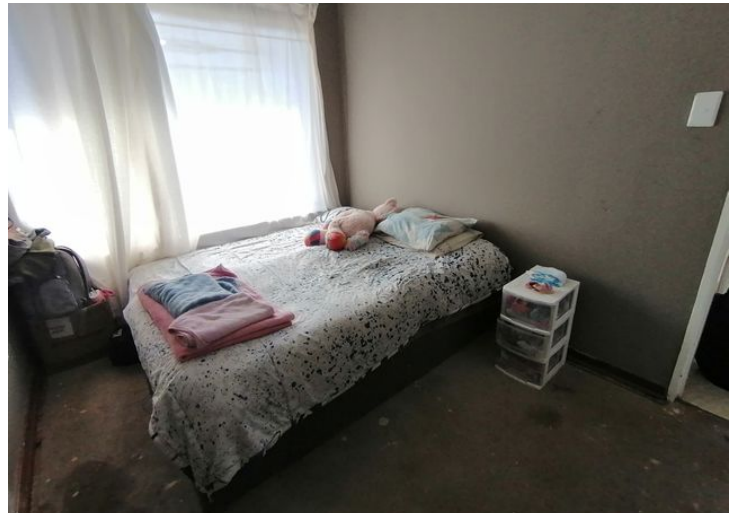
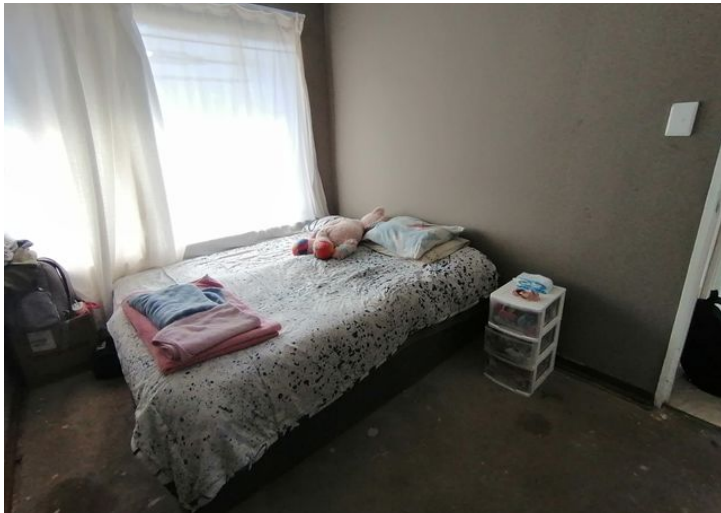
1 Bathroom

Lounge area perfect for relaxation and entertaining.

Schools:  
Ideal for families, the property is close to Ennerdale Secondary School, while Laerskool Oakdene is also nearby for younger children. Both schools offer quality education, making school runs a breeze.

Public Transport:  
With easy access to the M1 highway, as well as local minibus taxi services, commuting to central Johannesburg or other nearby areas is quick and hassle-free.

<b>Monthly Bond Repayment</b> Calculated over 20 years at 10.75% with no deposit.	-	<b>Bond Costs</b> These calculations are only a guide. Please ask your conveyancer for exact calculations	-
<b>Transfer Costs</b>	-	<b>Monthly Rates</b>	-



## INTERIOR

Bedrooms	2
Bathrooms	1
Kitchens	1
Recep. Rooms	1
Furnished	Yes

## EXTERIOR

Carports / Parkings	1
Security	Yes
Dom. Accom.	0
Pool	Yes
Views	Yes

## SIZES

Floor Size	55m <sup>2</sup>
Land Size	453m <sup>2</sup>



**Nonny Sindane**

Broker Manager

Registered with PPRA (FFC 1166966)

**060 417 5636**

nonny@finehome.co.za