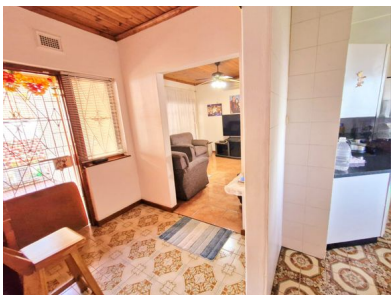


 3
  2
  1



## Are You Looking for a Property With Expansive Land Space? Then This is for You.

This 3 bedroom home, welcomes you, offering lots of potential, and located in a tranquil neighbourhood within Everest Heights.

The cosy entrance hall is versatile, leading to different parts of the home, giving the living space an easy flow. The spacious lounge leads to a centrally located dining with easy access to an equipped kitchen. All 3 bedrooms have ample storage space, while the main bedroom includes an en-suite. There is a shared bathroom and a guest toilet, adding to your convenience.

The kitchen leads you to a Veranda overlooking the back yard and the extended land space, which can be used for your preference.

There is a lengthy driveway leading to a single garage and plenty of open parking spaces.

### Monthly Bond Repayment

Calculated over 20 years at 10.75% with no deposit.

R12,690.36

### Bond Costs

These calculations are only a guide. Please ask your conveyancer for exact calculations

R27,105.00

### Transfer Costs

R36,117.00

### Monthly Rates

-



### INTERIOR

Bedrooms 3  
 Bathrooms 2  
 Kitchens 1  
 Recep. Rooms 2  
 Furnished Yes

### EXTERIOR

Carports / Parkings 6  
 Security Yes  
 Dom. Accom. 0  
 Pool Yes  
 Views Yes

### SIZES

Floor Size -  
 Land Size 1,597m<sup>2</sup>



**Kaylib Baccus**  
 Full Status Property Practitioner

**+27817783959**  
 kaylib@finehome.co.za



**Thiveshini Govender**  
 Candidate Property Practitioner

**074 580 1268**  
 thiveshini@finehome.co.za