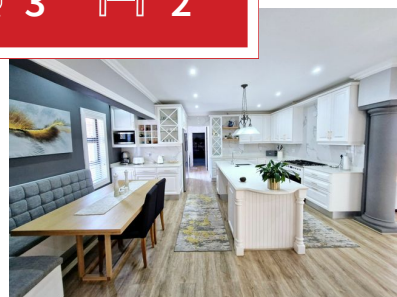
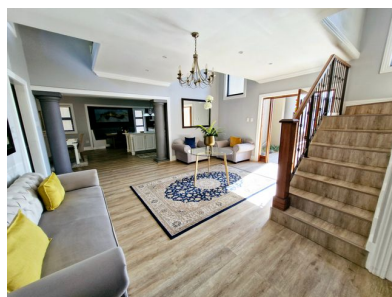
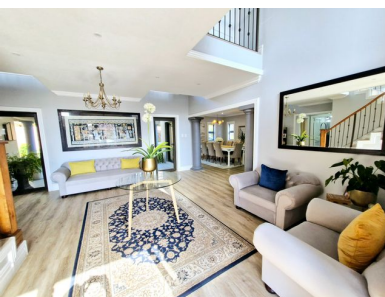


4 3 2



## Exquisite 4-Bedroom Mansion

Nestled within the sought-after Izinga Estate, this opulent double-storey residence epitomizes modern luxury and sophisticated living.

Designed with impeccable attention to detail, this home offers a seamless blend of contemporary elegance and functional spaces.

The ground floor is elegant & inviting, you are welcomed by a grand, open-plan lounge with sleek, modern finishes, accentuated by natural light cascading from large windows and the first-floor hallway indoor balcony. The heart of the home is a state-of-the-art kitchen, that boasts a scullery, a breakfast nook, and premium appliances, ensuring a refined culinary experience. The kitchen leads to a dining area that opens onto a covered patio, offering tranquil views of the manicured garden and a relaxing jacuzzi—ideal for entertaining. Completing this level is a cozy family lounge, a stylish guest bedroom, and a contemporary bathroom.

### Monthly Bond Repayment

Calculated over 20 years at 10.75% with no deposit.

R101,472.13

### Bond Costs

These calculations are only a guide. Please ask your conveyancer for exact calculations

R84,785.00

### Transfer Costs

R980,126.00

### Monthly Rates

R6,800





### INTERIOR

Bedrooms	4
Bathrooms	3
Kitchens	1
Recep. Rooms	3
Furnished	Yes

### EXTERIOR

Carports / Parkings	2
Security	Yes
Dom. Accom.	1
Pool	Yes
Views	Yes

### SIZES

Floor Size	507m <sup>2</sup>
Land Size	800m <sup>2</sup>



**Kaylib Baccus**  
 Full Status Property Practitioner  
**+27817783959**  
[kaylib@finehome.co.za](mailto:kaylib@finehome.co.za)