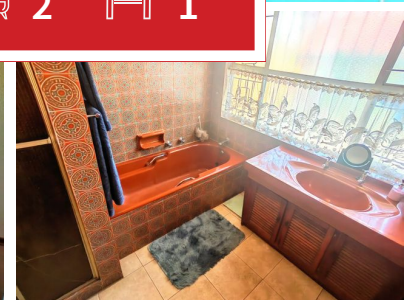
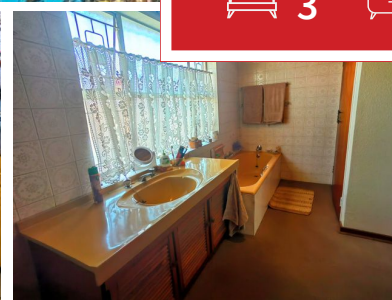
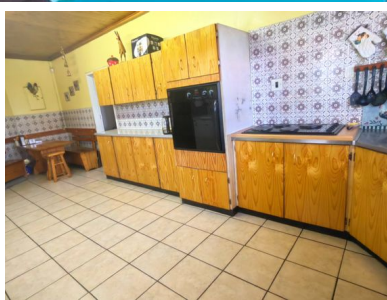
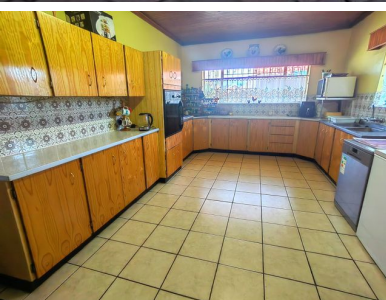


3 2 1



Tiled roof facebrick stunner!

This lovely, tiled roof family home is situated in a quiet suburb, this home offer, Spacious bedrooms with built in cupboards, bathrooms with a separate toilet for your convenience, Lounge, Dining room, Family size fitted kitchen with a scullery and laundry, Study, Outside offer double garages, lapa which overlooks the sparkling pool. Enjoy the luxury of having a borehole and sprinkler system
Don't miss out on this lovely family home!!

Monthly Bond Repayment

Calculated over 20 years at 10.75%
with no deposit.

R13,807.11

Bond Costs

These calculations are only a guide. Please ask
your conveyancer for exact calculations

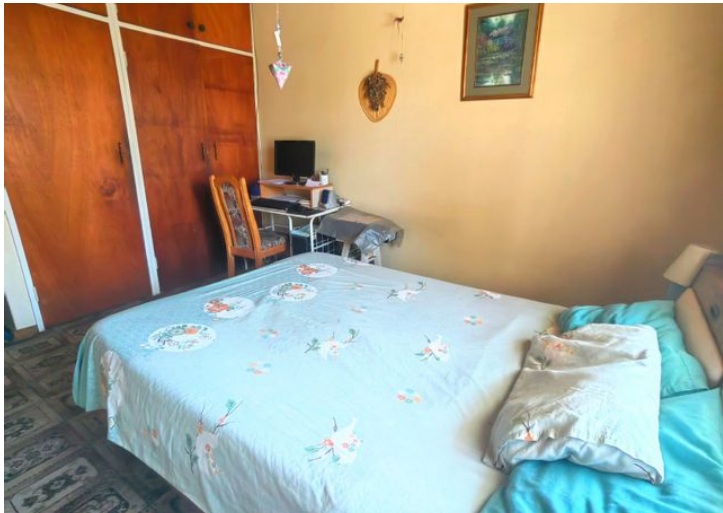
R27,105.00

Transfer Costs

R39,417.00

Monthly Rates

R890



INTERIOR

Bedrooms	3
Bathrooms	2
Kitchens	1
Recep. Rooms	3
Furnished	Maybe

EXTERIOR

Carports / Parkings	0
Security	Yes
Dom. Accom.	0
Pool	Yes
Views	Maybe

SIZES

Floor Size	270m ²
Land Size	1,042m ²



Lizette Kilian

Agent

+27748664229

thyscampersprings1@gmail.com