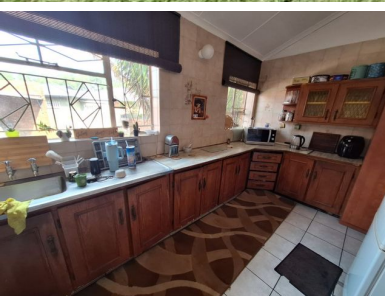




3 1 0



Cozy low maintenance home in popular area!

With some TLC this could be your forever home!!

This home is located in the sought after area of Casseldale, offer 3 spacious bedrooms, bathroom with a separate toilet, open plan lounge and dining area with an anthracite stove to keep you warm in the winter, kitchen has ample cupboard space and a gas stove. Outside offer a lovely big yard, outside room, toilet, carport, Lapa and pool (not in a working condition).

This home is located close to schools and shopping mall and offer easy access to the N12 highway!

Don't delay call me today to avoid disappointment!

Monthly Bond Repayment

Calculated over 20 years at 10.75% with no deposit.

R9,086.30

Bond Costs

These calculations are only a guide. Please ask your conveyancer for exact calculations

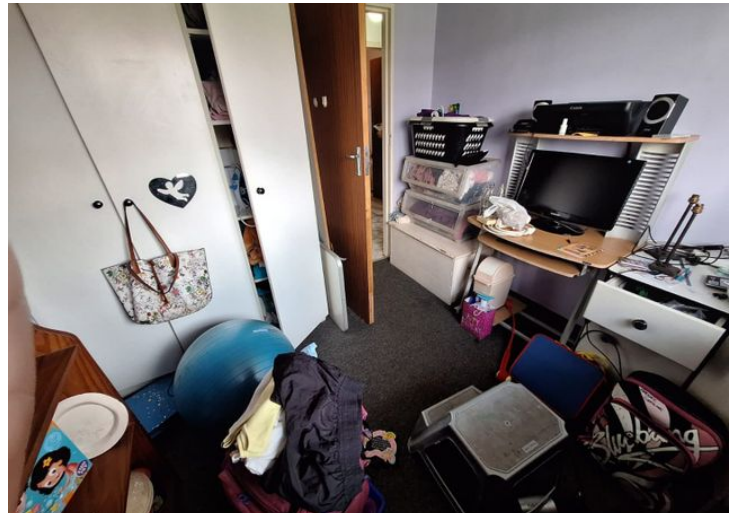
R21,450.00

Transfer Costs

R28,244.00

Monthly Rates

R911



INTERIOR

Bedrooms	3
Bathrooms	1
Kitchens	1
Recep. Rooms	2
Furnished	Maybe

EXTERIOR

Carports / Parkings	1
Security	Yes
Dom. Accom.	1
Pool	Yes
Views	Maybe

SIZES

Floor Size	1m ²
Land Size	1,115m ²



Lizette Kilian

Agent

+27748664229

thyscampersprings1@gmail.com