

This two-bedroom apartment located within a secured complex in Jabulani, Soweto.

2-bedroom apartment is located in the vibrant heart of Jabulani, where it is happening.

It is near Jabulani Mall, Soweto Theatre, garages, hospital, police stations and public transportation.

Whether you are considering it as an investment, as a bachelor, or as someone starting a family, it meets all your needs.

Take advantage of this opportunity while prices remain affordable.

#### Monthly Bond Repayment

Calculated over 20 years at 10.75%  
with no deposit.

R4,263.96

#### Bond Costs

These calculations are only a guide. Please ask  
your conveyancer for exact calculations

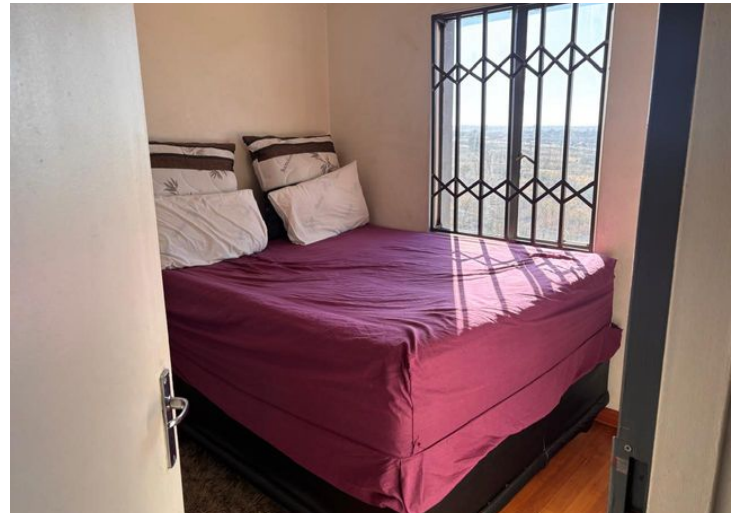
R12,935.00

#### Transfer Costs

R17,928.00

#### Monthly Rates

-



### INTERIOR

Bedrooms	2
Bathrooms	1
Kitchens	1
Recep. Rooms	1
Furnished	Yes

### EXTERIOR

Carports / Parkings	2
Security	Yes
Dom. Accom.	0
Pool	Yes
Views	Yes

### SIZES

Floor Size	40m <sup>2</sup>
Land Size	-



**Hilda Modikwe**  
 Candidate Property Practitioner  
**078 184 8001**  
[hilda@finehome.co.za](mailto:hilda@finehome.co.za)