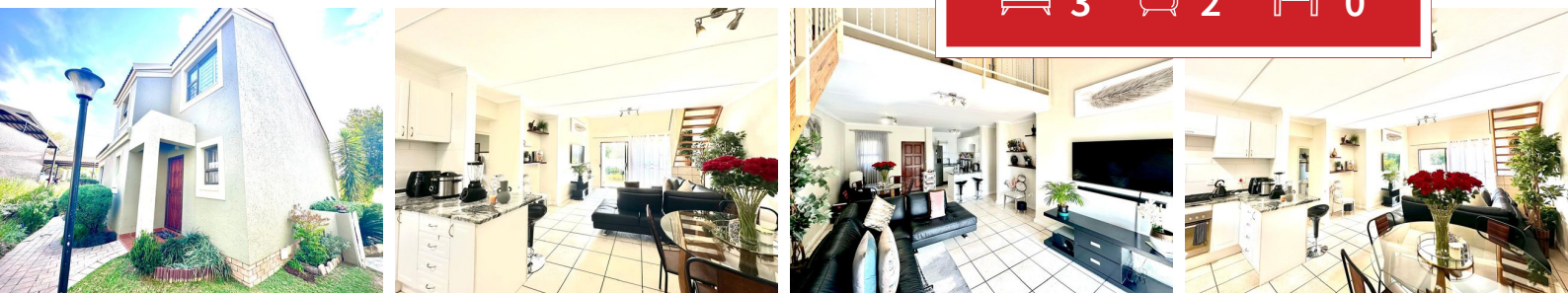




3 2 0



Your Dream Home Awaits - Tranquil, Spacious and Perfectly Located

AGENT HAPPY TO PRESENT ALL OFFERS

Step into a picturesque retreat designed for family living or a peaceful escape at the end of the day.

The heart of this home is a breathtaking open-plan kitchen, dining and lounge area, seamlessly extending to a covered patio and a lush, serene garden bursting with birdlife.

Downstairs, you'll find a full bathroom complemented by two generously sized bedrooms—ideal for comfort and convenience.

Upstairs, the expansive main bedroom offers its own private bathroom, creating a sanctuary of space.

Rates & Refuse: R1 037
Electricity: Pre-Paid
Water: Metered
Levy: R1 569.69 + Res Levy: R161.00 + CSOS: R21.39 + Sewerage: R704.47 = TOTAL: R2 456.55

Monthly Bond Repayment	R14,710.67	Bond Costs	R28,990.00
Calculated over 20 years at 10.75% with no deposit.		These calculations are only a guide. Please ask your conveyancer for exact calculations	
Transfer Costs	R44,255.00	Monthly Rates	R1,037



INTERIOR

Bedrooms	3
Bathrooms	2
Kitchens	1
Recep. Rooms	2
Furnished	Yes

EXTERIOR

Carports / Parkings	2
Security	Yes
Dom. Accom.	0
Pool	Yes
Views	Yes

SIZES

Floor Size	105m ²
Land Size	-



Bernie Birmingham

Agent

Registered with PPRA (FFC 2023325509)

079 501 4183

bernie@finehome.co.za