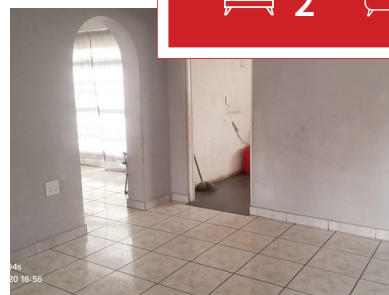




2 1 0



Beginner's Dream Home

2x Bedroom House in quiet neighborhood of Tlhabane West Comprises of

2x Bedroom fitted with Wardrobes

Living room

Seating room

Full Bathroom

And Kitchen

Remote controlled gate

Monthly Bond Repayment

Calculated over 20 years at 10.75%
with no deposit.

R8,121.83

Bond Costs

These calculations are only a guide. Please ask
your conveyancer for exact calculations

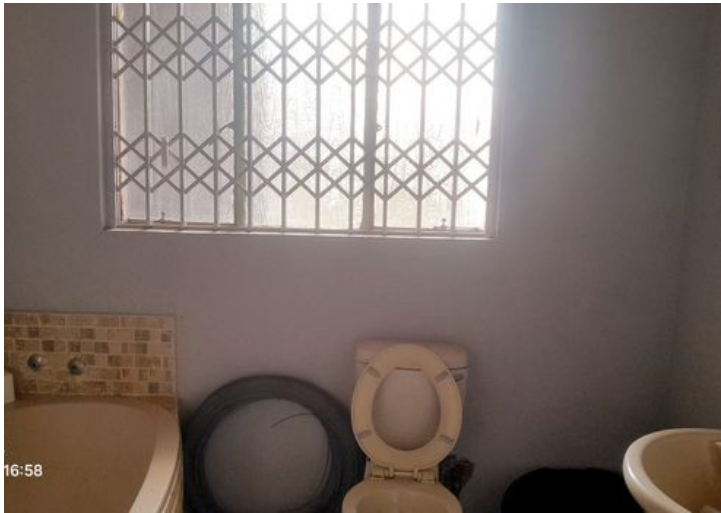
R19,565.00

Transfer Costs

R25,898.00

Monthly Rates

R1,800



INTERIOR

Bedrooms	2
Bathrooms	1
Kitchens	1
Recep. Rooms	2
Furnished	Yes

EXTERIOR

Carports / Parkings	0
Security	Yes
Dom. Accom.	0
Pool	Yes
Views	Yes

SIZES

Floor Size	55m ²
Land Size	350m ²



Emmanuel Naane

Broker Manager

Registered with PPRA (FFC 1196231)

081 781 6995

emmanuel@finehome.co.za