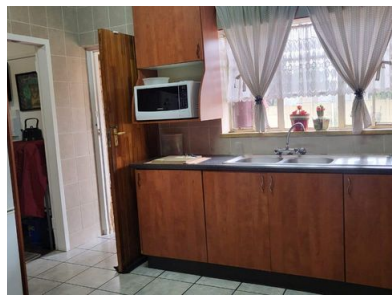


3 2 2



## LARGE FAMILY HOME WITH FLATLET AND POOL FOR SALE IN WITPOORTJIE.

This home has all you need it offers 3 bedrooms with built-in cupboards.  
2 bathrooms shower, bath, basin and toilet.  
Kitchen with ample space cupboards and laundry area.  
Open plan dining room area and living room with tiled floors.  
This property includes flatlet with kitchen, lounge, bedroom, and bathroom.  
It has large garden and lapa with built-in braai area with pool.  
Double garage and carport,  
For viewing whatsapp me.

### Monthly Bond Repayment

Calculated over 20 years at 10.75%  
with no deposit.

R13,705.59

### Bond Costs

These calculations are only a guide. Please ask  
your conveyancer for exact calculations

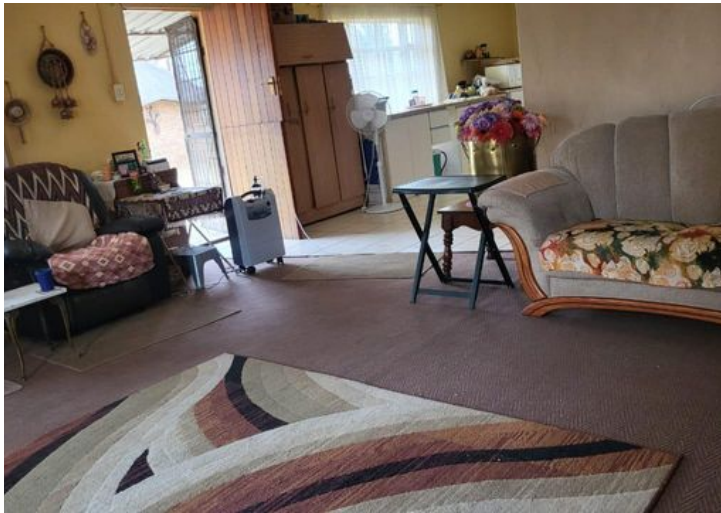
R27,105.00

### Transfer Costs

R39,117.00

### Monthly Rates

-



## INTERIOR

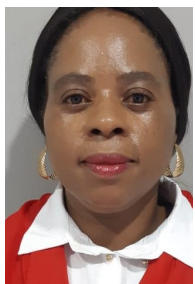
Bedrooms	3
Bathrooms	2
Kitchens	1
Recep. Rooms	2
Furnished	No

## EXTERIOR

Carports / Parkings	4
Security	No
Dom. Accom.	0
Pool	Yes
Views	Maybe

## SIZES

Floor Size	-
Land Size	1,115m <sup>2</sup>



**Dikeledi Mohlala**

Property Practitioner

**073 077 2598**

dikeledi@finehome.co.za