

 3
  2
  2



Charming Three-Bedroom Family Home in Weltevreden Park

This beautiful and inviting home offers comfort, style and practicality in equal measure. Immaculately maintained and neat as a pin, it's ready for you to move right in. Step into a warm and welcoming open plan lounge, dining room and bar area - perfect for entertaining or relaxing with the family. A separate study opens directly onto the patio and pool area, ideal for working from home or enjoying quiet moments with a garden view.

The home offers three well-sized bedrooms, all with built-in cupboards. The main bedroom is a true retreat, featuring a walk-in closet and a modern en-suite bathroom. A second stylish bathroom services the other bedrooms. Outside, you'll find a double garage along with ample additional parking for visitors. The landscaped garden boasts a sparkling pool, patio and a dedicated play area - perfect for family fun and weekend braais. Ideally situated close to schools, shopping centers and main roads, this home combines peaceful living with everyday convenience.

Don't miss out - call us to arrange your exclusive viewing.

Monthly Bond Repayment

Calculated over 20 years at 10.75% with no deposit.

R19,238.59

Bond Costs

These calculations are only a guide. Please ask your conveyancer for exact calculations

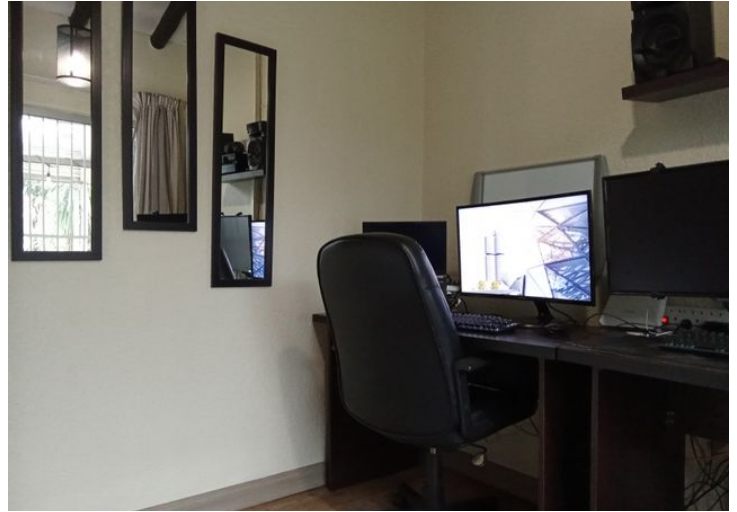
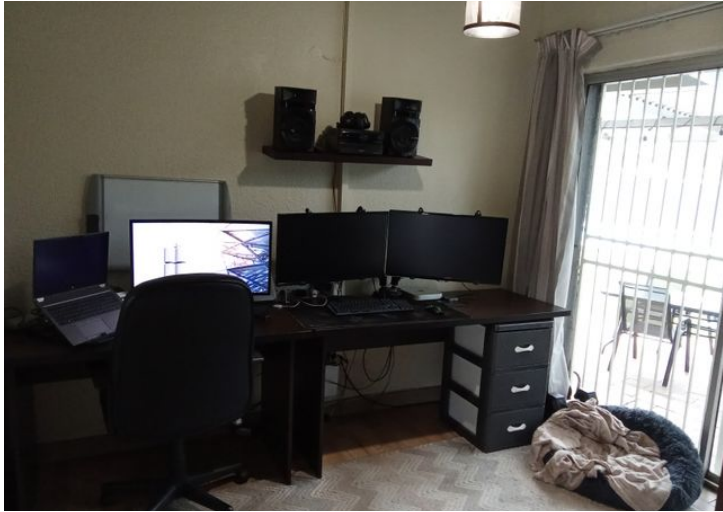
R32,760.00

Transfer Costs

R68,906.00

Monthly Rates

R1,087



INTERIOR

Bedrooms	3
Bathrooms	2
Kitchens	1
Recep. Rooms	2
Furnished	Yes

EXTERIOR

Carports / Parkings	3
Security	Yes
Dom. Accom.	0
Pool	Yes
Views	Yes

SIZES

Floor Size	370m ²
Land Size	1,072m ²



Aret Notnagel

Agent

071 731 0640

aret@finehome.co.za

