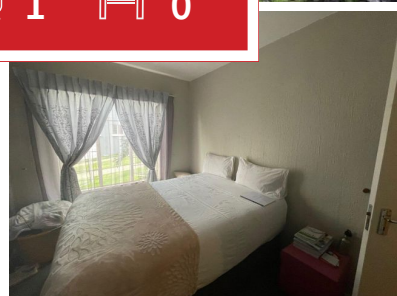
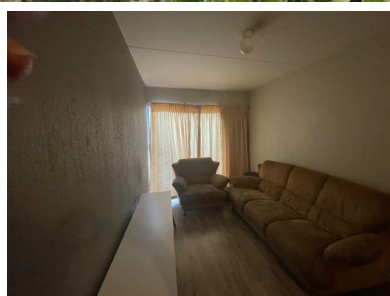


1 1 0



Very neat ground floor, one bedroom flat.

Very neat ground floor one bedroomed flat, with good size lounge, neat kitchen, patio, modern bathroom. Covered parking with extra visitors parking. Communal pool and is opposite Wilgeheuwel hospital. Walking distance to amenities, schools, sports ground and shops including a Pick n Pay. On a bus route and centrally situated.

Monthly Bond Repayment

Calculated over 20 years at 10.75% with no deposit.

R3,857.87

Bond Costs

These calculations are only a guide. Please ask your conveyancer for exact calculations

R11,960.00

Transfer Costs

R16,806.00

Monthly Rates

R1,508



INTERIOR

Bedrooms	1
Bathrooms	1
Kitchens	1
Recep. Rooms	0
Furnished	Yes

EXTERIOR

Carports / Parkings	0
Security	Yes
Dom. Accom.	0
Pool	Yes
Views	Yes

SIZES

Floor Size	-
Land Size	-



Sheila Maybury

Property Practitioner

Registered with PPRA (FFC 20227141331)

074 103 0901

sheila@finehome.co.za

