

3 2 2

3 Bedroom Appartment at Laser Park,Honeydew

These Property offers the following

3 spacious Bedrooms

Open plan Lounge

Kitchen with build in cub boards

2 Bathroom with toilet other with shower and toilet En suit

Garden

Parking

Secure yard with 24hrs security

Monthly Bond Repayment

Calculated over 20 years at 10.75%
with no deposit.

R8,629.45

Bond Costs

These calculations are only a guide. Please ask
your conveyancer for exact calculations

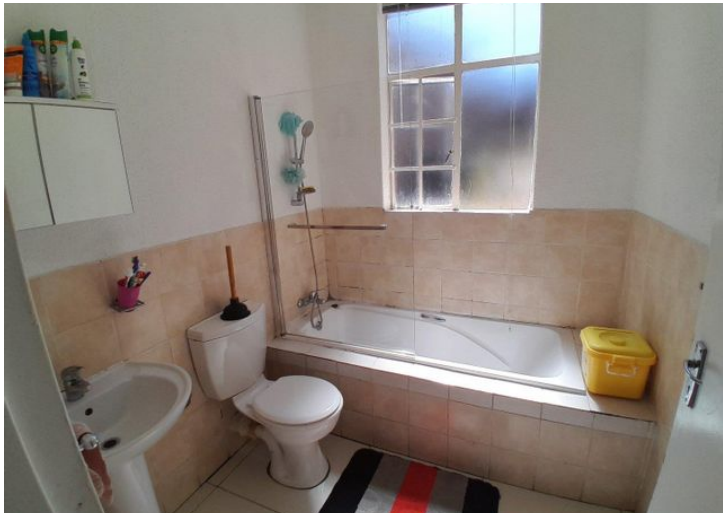
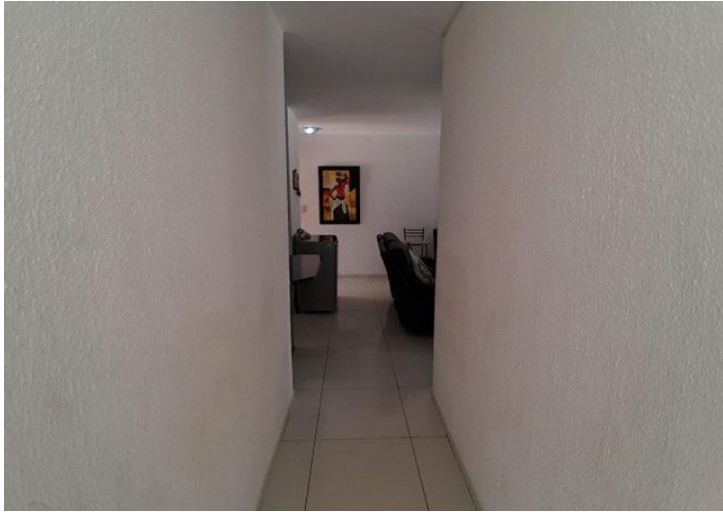
R21,450.00

Transfer Costs

R28,244.00

Monthly Rates

-



INTERIOR

Bedrooms	3
Bathrooms	2
Kitchens	1
Recep. Rooms	0
Furnished	Yes

EXTERIOR

Carports / Parkings	0
Security	Maybe
Dom. Accom.	0
Pool	Yes
Views	Maybe

SIZES

Floor Size	-
Land Size	-



Professor More
Candidate Property Practitioner

082 621 6754
professor@finehome.co.za