



5 4 1



This stunning family home in the heart of Horison offers a rare combination of space

A beautiful family home that has space, luxury, and functionality. Set on a generous 2163 sqm plot, the property is perfectly positioned on the desirable north side of Ontdekkers Road.

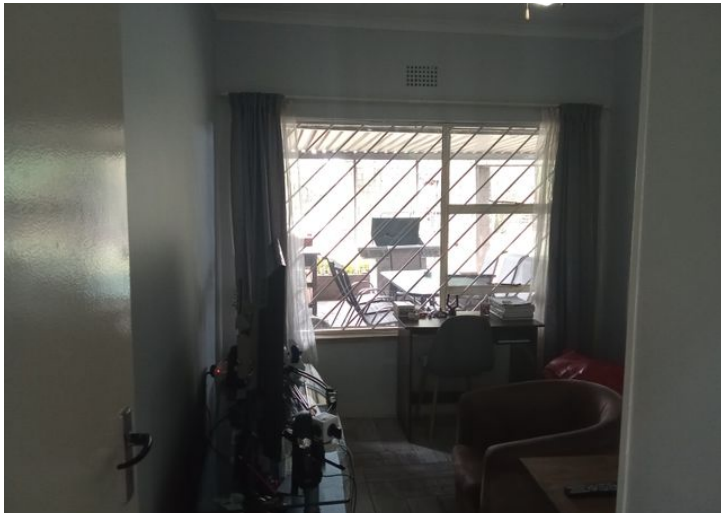
Key features of this home include:

- 5 spacious bedrooms with 3.5 modern bathrooms, including a luxurious main en-suite.
- Expansive kitchen designed for chefs, featuring a premium gas stove, ample cupboard space, and easy flow to the dining room and lounge area.
- Versatile living spaces, including a flexible room ideal as a home office or second lounge.
- Covered entertainment area leading to a lush back garden with a sparkling pool and additional braai area—perfect for summer gatherings.

Concrete flatlet with 2 bedrooms, an open-plan kitchen and lounge, and a bathroom—ideal for rental income or

5 spacious bedrooms with 3.5 modern bathrooms, including a luxurious main in-suite.
Expansive kitchen designed for chefs, featuring a premium gas stove, ample cupboard space, and easy flow to the dining room and lounge area.
Versatile living spaces, including a flexible room ideal as a home office or second lounge.
Covered entertainment area leading to a lush back garden with a sparkling pool and additional braai area—perfect for summer gatherings.
Separate flatlet with 2 bedrooms, an open-plan kitchen and lounge, and a bathroom—ideal for rental income or accommodating extended family.
Dedicated laundry room for added convenience.
Energy-efficient features including gas geysers, security cameras, beams, and solar lights, ensuring both comfort and

Monthly Bond Repayment	R30,406.11	Bond Costs	R42,185.00
Calculated over 20 years at 10.75% with no deposit.		These calculations are only a guide. Please ask your conveyancer for exact calculations	
Transfer Costs	R159,661.00	Monthly Rates	R1,194



INTERIOR

Bedrooms	5
Bathrooms	4
Kitchens	1
Recep. Rooms	2
Furnished	Yes

EXTERIOR

Carports / Parkings	2
Security	Yes
Dom. Accom.	1
Pool	Yes
Views	Yes

SIZES

Floor Size	2,163m ²
Land Size	1,080m ²



Pumla Ndabeni
Candidate Property Practitioner

076 400 1569
pumla@finehome.co.za