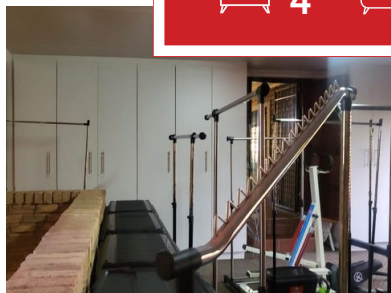
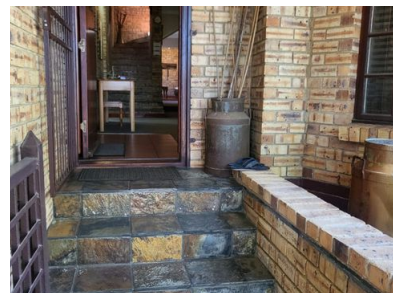




4 3 2



FACEBRICK HOME WITH SPACTACULAR VIEWS.

Architecturally designed to capture morning and afternoon sunlight through huge windows.
Welcome by double automated garages and carport cater for 2 vehicles.
Lovely entrance leads to lounge,dining area, and separate toilet for guest.
Lounge/TV room area with carpets floors.
Kitchen with built-in cupboards ample space for all your appliances and scullery,laundry .
These property offers 4 bedrooms with built-in cupboards.
3 bathrooms one is for the main en-suites.
Its has gym area foe all your gym equipment's.
Lovely garden ,pool and lapa.
Close to all amenities ,schools, medical center,public health care (clinic) and shopping malls.
Easy to access public transport.

Monthly Bond Repayment

Calculated over 20 years at 10.75%
with no deposit.

R20,253.82

Bond Costs

These calculations are only a guide. Please ask
your conveyancer for exact calculations

R32,760.00

Transfer Costs

R74,906.00

Monthly Rates

R1,050



INTERIOR

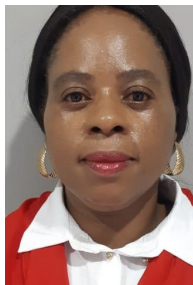
Bedrooms	4
Bathrooms	3
Kitchens	1
Recep. Rooms	2
Furnished	Yes

EXTERIOR

Carports / Parkings	2
Security	Yes
Dom. Accom.	1
Pool	Yes
Views	Yes

SIZES

Floor Size	320m ²
Land Size	550m ²



Dikeledi Mohlala
Property Practitioner

073 077 2598
dikeledi@finehome.co.za

