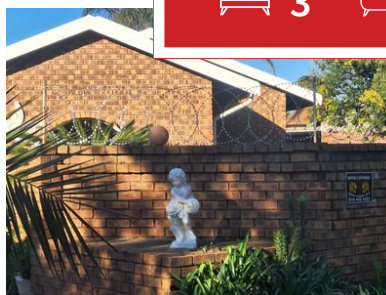




 3
  2
  2



Family Home On A Double Stand ?

This lovely three-bedroom property, is standing on a double stand, ideal for a young family. This face brick home with low maintenance is ready for a young couple to move in and grow there family here. The garden is well maintained and will satisfy all your needs for your furry kids to run around and later for your children and there friends, to play outside in the spacious garden while you entertain friends and family at your new home. Your new home is situated in a cul-de-sac, ideal for kids to ride their bicycles, not being in a busy road. This home of yours have 3 spacious bedrooms, all carpeted with built-in-cupboards, looking onto the lush green garden. The main bedroom has an En-suite with a bath, the second bathroom has a shower and a bath. The sunny lounge area will be where you start your morning now with the winter with the sun greeting you there while having your morning coffee. The dining room may also be changed into a study, for a work from home Mom or Dad. The open plan Tv/ lounge has a door going out onto a patio to catch the last sun rays of the sun in the afternoon. The kitchen is also open plan to the lounge area. here is ample cupboard space with a breakfast nook for those quick mornings to have breakfast before work and school. You have a separate scullery/ laundry area.

Monthly Bond Repayment

Calculated over 20 years at 10.75% with no deposit.

R12,690.36

Bond Costs

These calculations are only a guide. Please ask your conveyancer for exact calculations

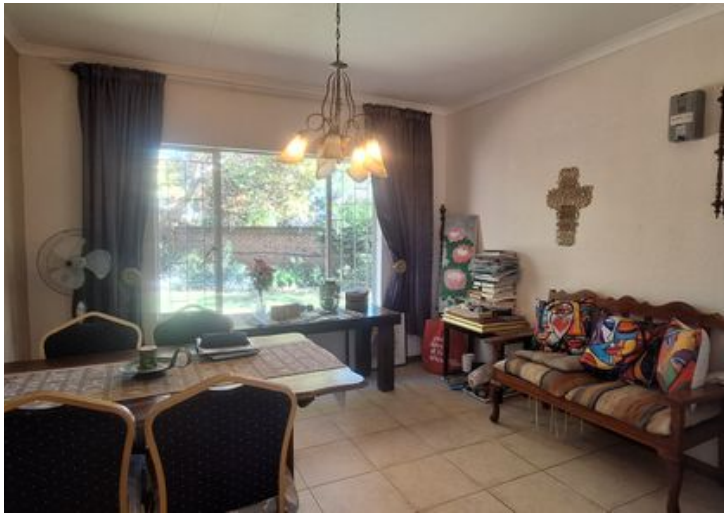
R27,105.00

Transfer Costs

R36,117.00

Monthly Rates

R1,200



INTERIOR

Bedrooms	3
Bathrooms	2
Kitchens	1
Recep. Rooms	3
Furnished	Yes

EXTERIOR

Carports / Parkings	2
Security	Yes
Dom. Accom.	0
Pool	Yes
Views	Yes

SIZES

Floor Size	140m ²
Land Size	1,600m ²



Hanlie Eksteen
Agent
082 335 3268
hanlie@finehome.co.za

