



2 hectares plot with a flatlet for sale in Pelzvale

For sale in Pelzvale, Randfontein: A spacious 2-hectare plot full of potential.

The property offers a 5-bedroom house, a flatlet, and an additional structure that can easily be converted into a second flatlet.

Extras include a Wendy house, a storeroom, and an entertainment area with a built-in braai—perfect for gatherings.

A borehole with a JoJo tank ensures water sustainability, and the fertile soil makes it ideal for small-scale farming.

Experience peaceful country living with plenty of space, comfort, and opportunity.

Monthly Bond Repayment

Calculated over 20 years at 10.75%
with no deposit.

R13,187.82

Bond Costs

These calculations are only a guide. Please ask
your conveyancer for exact calculations

R27,105.00

Transfer Costs

R37,587.00

Monthly Rates

R540



INTERIOR

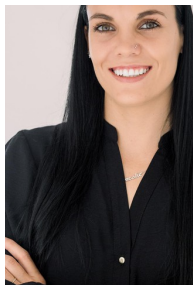
| | |
|--------------|-----|
| Bedrooms | 5 |
| Bathrooms | 3 |
| Kitchens | 1 |
| Recep. Rooms | 2 |
| Furnished | Yes |

EXTERIOR

| | |
|---------------------|-----|
| Carports / Parkings | 4 |
| Security | Yes |
| Dom. Accom. | 0 |
| Pool | Yes |
| Views | Yes |

SIZES

| | |
|------------|-----|
| Floor Size | - |
| Land Size | 2Ha |



Berneshe Swanepoel

Agent

Registered with PPRA (FFC 1264295)

071 188 5892

berneshe@finehome.co.za



Justin Joubert

Agent

072 191 9244

justin@finehome.co.za