



Recently Renovated Gem in Eike Park.

Fully renovated to reveal its true potential, this exceptional home in Eike Park (bordering Helikon Park) is a showcase of comfort, modern elegance, and quality craftsmanship. With top-of-the-line finishes throughout, this residence offers both style and functionality.

Situated on a fully enclosed 757m² stand with electric fencing, the property features a paved driveway leading to a double garage and a single carport. The exterior is just as impressive—highlighted by a sparkling swimming pool and an open-plan entertainment patio complete with a built-in braai and concrete seating, perfect for entertaining guests or enjoying relaxed family time.

Inside, a welcoming entrance hall opens up into spacious open-plan living areas, including a dining room, lounge, and TV room. Rich wooden window frames enhance the natural beauty of the thatch roof, creating a warm and inviting ambience. The brand-new kitchen features modern appliances, granite countertops, and a separate laundry area for

Monthly Bond Repayment

Calculated over 20 years at 10.75%
with no deposit.

R21,827.42

Bond Costs

These calculations are only a guide. Please ask
your conveyancer for exact calculations

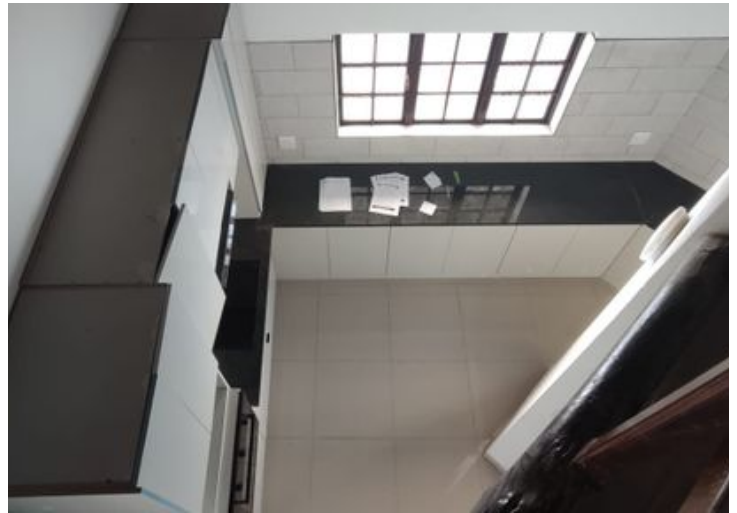
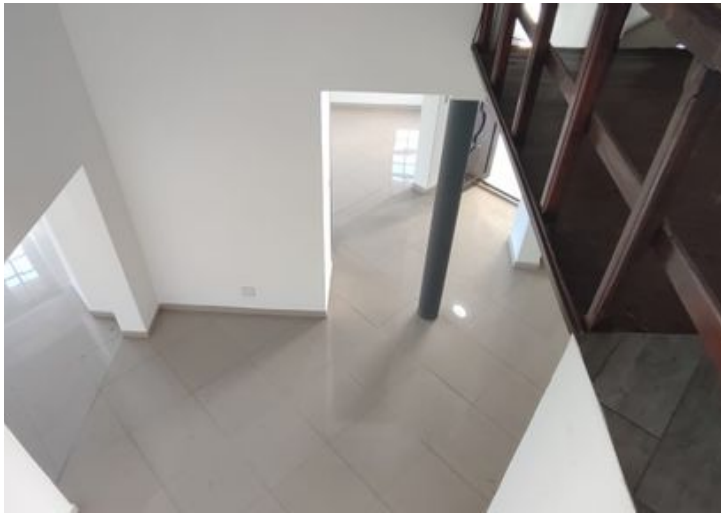
R34,625.00

Transfer Costs

R86,947.00

Monthly Rates

R1,555



INTERIOR

Bedrooms	4
Bathrooms	3
Kitchens	1
Recep. Rooms	2
Furnished	Yes

EXTERIOR

Carports / Parkings	1
Security	Yes
Dom. Accom.	1
Pool	Yes
Views	Yes

SIZES

Floor Size	-
Land Size	-



Nita Jordt

Agent

083 754 2902

nita@finehome.co.za