

4
 3
 1

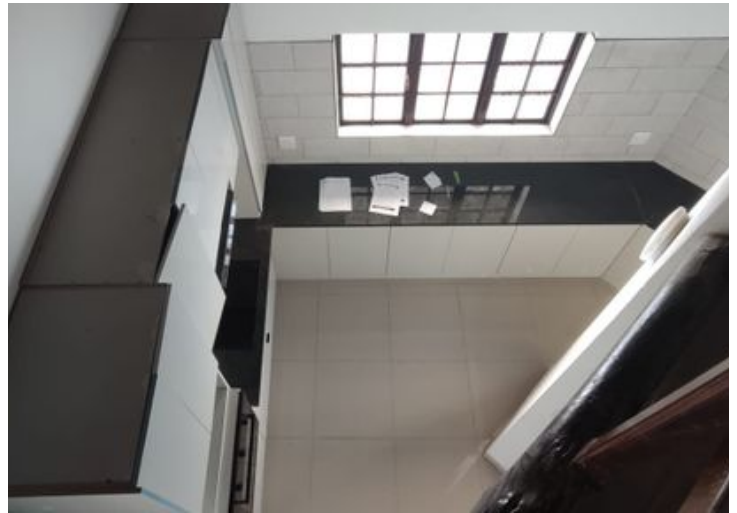
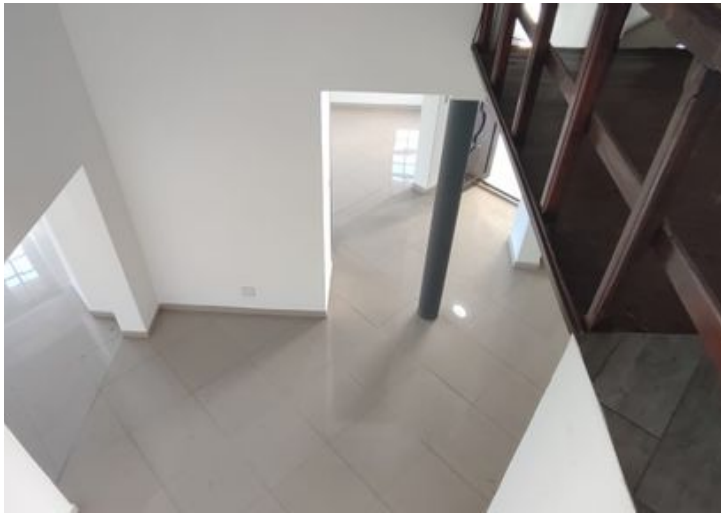
### Recently Renovated Gem in Eike Park.

Fully renovated to reveal its true potential, this exceptional home in Eike Park (bordering Helikon Park) is a showcase of comfort, modern elegance, and quality craftsmanship. With top-of-the-line finishes throughout, this residence offers both style and functionality.

Situated on a fully enclosed 757m<sup>2</sup> stand with electric fencing, the property features a paved driveway leading to a double garage and a single carport. The exterior is just as impressive—highlighted by a sparkling swimming pool and an open-plan entertainment patio complete with a built-in braai and concrete seating, perfect for entertaining guests or enjoying relaxed family time.

Inside, a welcoming entrance hall opens up into spacious open-plan living areas, including a dining room, lounge, and TV room. Rich wooden window frames enhance the natural beauty of the thatch roof, creating a warm and inviting ambience. The brand-new kitchen features modern appliances, granite countertops, and a separate laundry area for

<b>Monthly Bond Repayment</b> Calculated over 20 years at 10.75% with no deposit.	R21,827.42	<b>Bond Costs</b> These calculations are only a guide. Please ask your conveyancer for exact calculations	R34,625.00
<b>Transfer Costs</b>	R86,947.00	<b>Monthly Rates</b>	R1,555



### INTERIOR

Bedrooms	4
Bathrooms	3
Kitchens	1
Recep. Rooms	5
Furnished	Maybe

### EXTERIOR

Carports / Parkings	1
Security	Yes
Dom. Accom.	1
Pool	Yes
Views	Maybe

### SIZES

Floor Size	385m <sup>2</sup>
Land Size	757m <sup>2</sup>



Nita Jordt  
Agent

**083 754 2902**  
nita@finehome.co.za