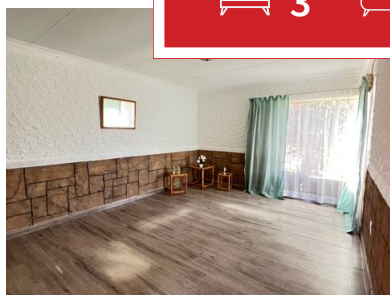
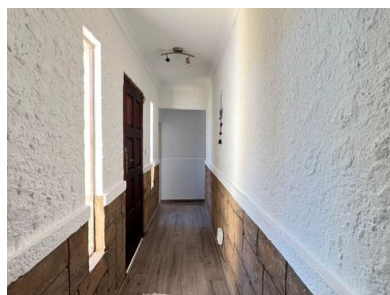




 **3**
 **1**
 **0**



## 3 bedroom house with Flatlet for sale

This neat and well-maintained home in Eike Park offers 3 bedrooms, 1 bathroom, and a spacious full flatlet—perfect for extended family or rental income.

The property includes a carport, a Wendy house for extra storage, and a large backyard with its own entrance.

An alarm system is in place for added security.

Conveniently located within walking distance from the local college, this home is ideal for families or investors alike.

### Monthly Bond Repayment

Calculated over 20 years at 11%  
with no deposit.

R9,392.91

### Bond Costs

These calculations are only a guide. Please ask  
your conveyancer for exact calculations

R23,335.00

### Transfer Costs

R30,412.00

### Monthly Rates

R890





## INTERIOR

|              |     |
|--------------|-----|
| Bedrooms     | 3   |
| Bathrooms    | 1   |
| Kitchens     | 1   |
| Recep. Rooms | 2   |
| Furnished    | Yes |

## EXTERIOR

|                     |     |
|---------------------|-----|
| Carports / Parkings | 8   |
| Security            | Yes |
| Dom. Accom.         | 0   |
| Pool                | Yes |
| Views               | Yes |

## SIZES

|            |                   |
|------------|-------------------|
| Floor Size | 145m <sup>2</sup> |
| Land Size  | 630m <sup>2</sup> |



**Berneshe Swanepoel**  
Agent

Registered with PPRA (FFC 1264295)

**071 188 5892**

berneshe@finehome.co.za



**Justin Joubert**  
Agent

**072 191 9244**

justin@finehome.co.za