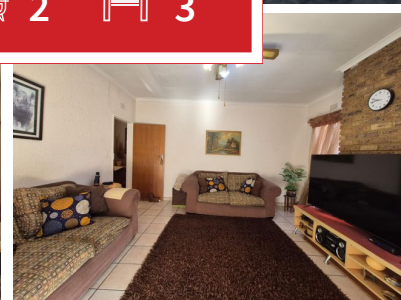
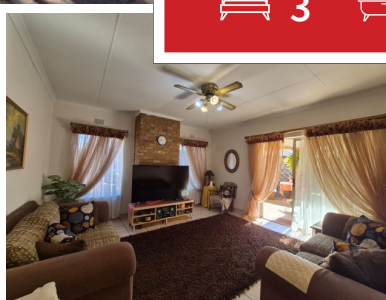
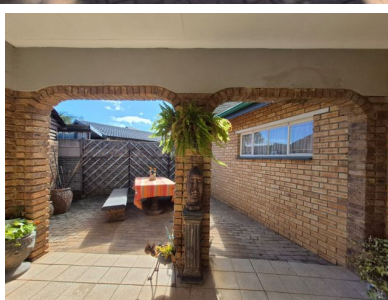




3 2 3



Make Your Dream Address a Reality in Culemborg Park.

Set in the peaceful suburb of Culemborg Park, this delightful family home combines timeless charm with modern convenience. Positioned on a generous 1000m² stand, the home welcomes you with a warm entrance hall that opens into spacious, light-filled living areas.

Boasting three comfortable bedrooms and two full bathrooms, this home is designed with family living in mind. The inviting country-style kitchen offers character and functionality, flowing effortlessly into the open-plan dining area, cozy lounge, and a spacious TV room—perfect for both relaxed family time and entertaining.

Step outside to a beautifully maintained garden, complete with a sparkling swimming pool for sunny days. The thatched lapa, featuring a built-in braai and bar, provides the ideal space for weekend get-togethers with friends and family. A double garage, electric gate, and perimeter fencing add both security and convenience.

Monthly Bond Repayment

Calculated over 20 years at 10.75% with no deposit.

R19,279.20

Bond Costs

These calculations are only a guide. Please ask your conveyancer for exact calculations

R32,760.00

Transfer Costs

R69,146.00

Monthly Rates

R2,250



INTERIOR

Bedrooms	3
Bathrooms	2
Kitchens	1
Recep. Rooms	6
Furnished	Maybe

EXTERIOR

Carports / Parkings	1
Security	Yes
Dom. Accom.	0
Pool	Yes
Views	Maybe

SIZES

Floor Size	295m ²
Land Size	1,000m ²



Beulah Mienie

Agent

083 351 7777

beulah@finehome.co.za

