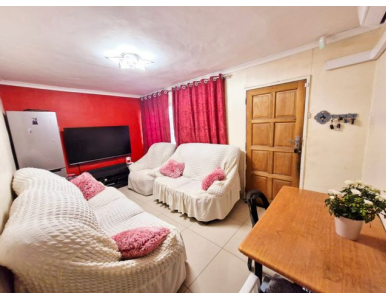


2 1 0



## A perfect starter in Grove End.

Whether you're a first-time home buyer or an investor, this is a great start!

This split-level townhouse has two spacious bedrooms upstairs, both bedrooms have built-in units.

The lower level encompasses a cozy, open-plan lounge and dining, 1 shared bathroom and a fitted kitchen .

The property has plenty of potential for growth, with an expansive yard space. There is enough place for gatherings, parking, and expansion. The backyard offers more space for gardening, which can be closed off. This could be an ideal private area for you and your family. With a little vision and tlc, this house could be transformed into your perfect home.

The property is located in a great neighborhood. Give us a call to secure this home.

### Monthly Bond Repayment

Calculated over 20 years at 10.75%  
with no deposit.

R8,619.29

### Bond Costs

These calculations are only a guide. Please ask  
your conveyancer for exact calculations

R21,450.00

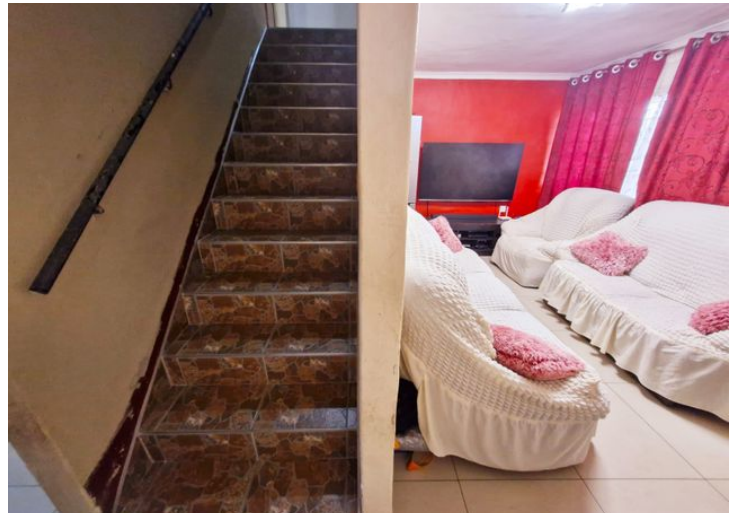
### Transfer Costs

R28,244.00

### Monthly Rates

R550





## INTERIOR

Bedrooms	2
Bathrooms	1
Kitchens	1
Recep. Rooms	2
Furnished	Yes

## EXTERIOR

Carports / Parkings	3
Security	Yes
Dom. Accom.	0
Pool	Yes
Views	Yes

## SIZES

Floor Size	-
Land Size	284m <sup>2</sup>



### Thiveshini Govender

Candidate Property Practitioner

**074 580 1268**

thiveshini@finehome.co.za



### Kaylib Baccus

Full Status Property Practitioner

**+27817783959**

kaylib@finehome.co.za