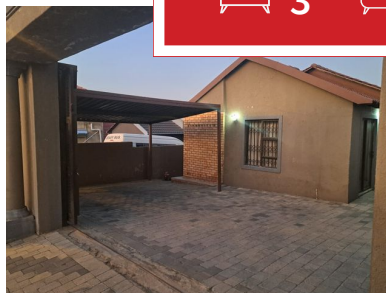
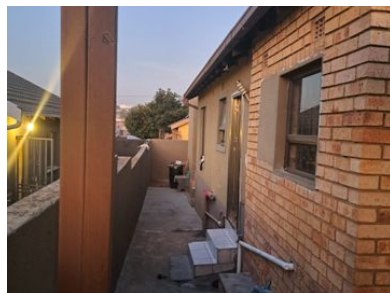
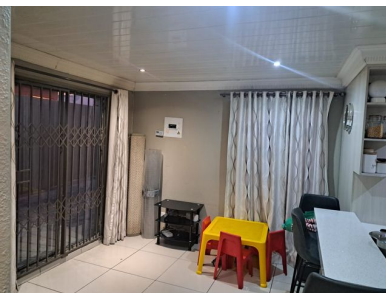




3 1 0



## BEAUTIFULL THREE BEDROOM FAMILY HOUSE

THIS LOVELY THREEE BEDROOM HOUSE COMES WITH THREE SPACIOUS BEDROOM ALL FITTTED WITH BUILD IN WARDROBES , MORDERN DESIGN KITCHEN WITH WITH BUILD IN CUPBOARDS FITTED WITH STOVE AND HOB . VERY NEAT AND ` CLEAN ALL ROUND HOUSE WITH ALUMINUM WINDOWS AND ALSO DOOR. VERY NEAT YARD FULLY PAVED YARD WITH A CARPORT .

COMES WITHJ TWO OUTSIDE ROOMS FOR EXTRA INCOME .

KLIPFONTEIN VIEW IS NESTED IN THE WARM SUBURBS OF MIDRAND JUST 10 MINS AWAY FROM MALL OF AFRICA AND MAJOR HIGH WAYS LEADING TO JOHANESSBURG OR PRETORIA . 15 MINS AWAY FROM OR TAMBO AIRPORT

### Monthly Bond Repayment

Calculated over 20 years at 10.75% with no deposit.

R10,152.29

### Bond Costs

These calculations are only a guide. Please ask your conveyancer for exact calculations

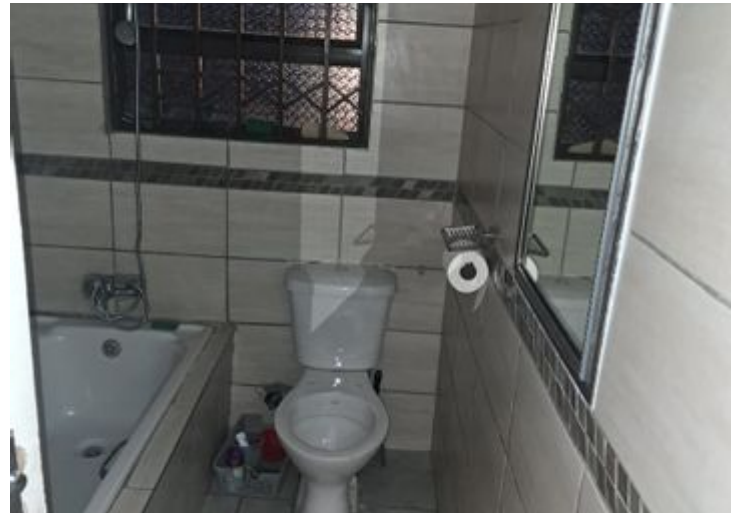
R23,335.00

### Transfer Costs

R30,412.00

### Monthly Rates

R450



## INTERIOR

Bedrooms	3
Bathrooms	1
Kitchens	1
Recep. Rooms	1
Furnished	Yes

## EXTERIOR

Carports / Parkings	3
Security	Yes
Dom. Accom.	0
Pool	Yes
Views	Yes

## SIZES

Floor Size	60m <sup>2</sup>
Land Size	285m <sup>2</sup>



**Lucky Tshabalala**

Agent

**074 326 4719**

lucky@finehome.co.za

