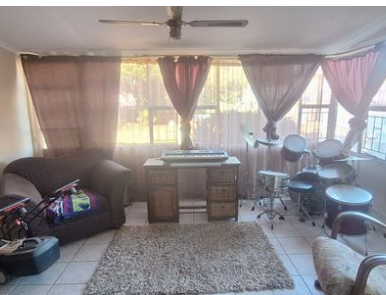




3 2 4



Spacious Family home with Flatlet, phone now.

This spacious family home is waiting for it's new owner, may it be you? The main house have 3 bedrooms with tiled flooring and built-in-cupboards. The main bedroom has an En suite bathroom and here is a family bathroom as well. The kitchen has ample cupboard space ,a breakfast nook, the kitchen is open plan to the family -TV room with built in cupboard, may be uses as another bedroom The lounge and dining are is open planned.

Outside: is a 2 bedroom flatlet for additional income or for the extended family. There is a braai entertainment area outside. Here is two gates to enter the yard, one for the family and one for tenants if needed. Please phone now for an exclusive viewing.

Monthly Bond Repayment

Calculated over 20 years at 10.75% with no deposit.

R11,928.94

Bond Costs

These calculations are only a guide. Please ask your conveyancer for exact calculations

R25,220.00

Transfer Costs

R32,749.00

Monthly Rates

R1,450



INTERIOR

Bedrooms	3
Bathrooms	2
Kitchens	1
Recep. Rooms	2
Furnished	Yes

EXTERIOR

Carports / Parkings	4
Security	Yes
Dom. Accom.	0
Pool	Yes
Views	Yes

SIZES

Floor Size	220m ²
Land Size	765m ²



Hanlie Eksteen

Agent

082 335 3268

hanlie@finehome.co.za

