



## lovely 3 bedroom , pet friendly townhouse for sale

Welcome to your private retreat on a sought-after corner stand, featuring its own lush garden and separate entrance.

Designed for low-maintenance living, it's framed by neat, inviting greenery—perfect for a quiet morning coffee or entertaining guests.

Its prime position offers both privacy and tranquility while keeping you close to shops, top schools, and major transport routes.

Inside, an airy open-plan lounge flows effortlessly into a contemporary kitchen with sleek finishes and a cozy breakfast nook for relaxed meals.

Three well-sized bedrooms provide comfort for family or visitors, with the main suite offering the luxury of its own en suite

### Monthly Bond Repayment

Calculated over 20 years at 10.75%  
with no deposit.

R12,182.75

### Bond Costs

These calculations are only a guide. Please ask  
your conveyancer for exact calculations

R25,220.00

### Transfer Costs

R32,749.00

### Monthly Rates

-



### INTERIOR

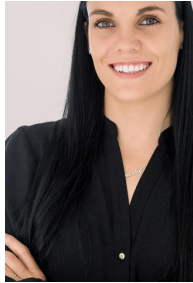
|              |     |
|--------------|-----|
| Bedrooms     | 3   |
| Bathrooms    | 2   |
| Kitchens     | 1   |
| Recep. Rooms | 2   |
| Furnished    | Yes |

### EXTERIOR

|                     |     |
|---------------------|-----|
| Carports / Parkings | 1   |
| Security            | Yes |
| Dom. Accom.         | 0   |
| Pool                | Yes |
| Views               | Yes |

### SIZES

|            |                   |
|------------|-------------------|
| Floor Size | 111m <sup>2</sup> |
| Land Size  | 111m <sup>2</sup> |



**Berneshe Swanepoel**  
Agent

Registered with PPRA (FFC 1264295)

**071 188 5892**  
berneshe@finehome.co.za

