



3 2 1



New listing! Low maintenance face brick Simplex in a security complex in popular Rangeview ext. 4

a Simplex with a lock up garage and own landscaped garden which is well located close to all amenities and private schools.

This Unit has its own entrance and consist of 3 sunny bedrooms and two bathrooms with an en-suite bathroom.

The open plan kitchen with lots of cupboards, oven and Hob, with a nook links to a spacious lounge with a sliding door leading to the garden.

The lock up garage has an additional secure parking space for visitors and there are sufficient security arrangements such as security gate, electric gate and electric fencing on the perimeter wall.

Rates are low and levies reasonable.

Monthly Bond Repayment

Calculated over 20 years at 10.75%
with no deposit.

R12,182.75

Bond Costs

These calculations are only a guide. Please ask
your conveyancer for exact calculations

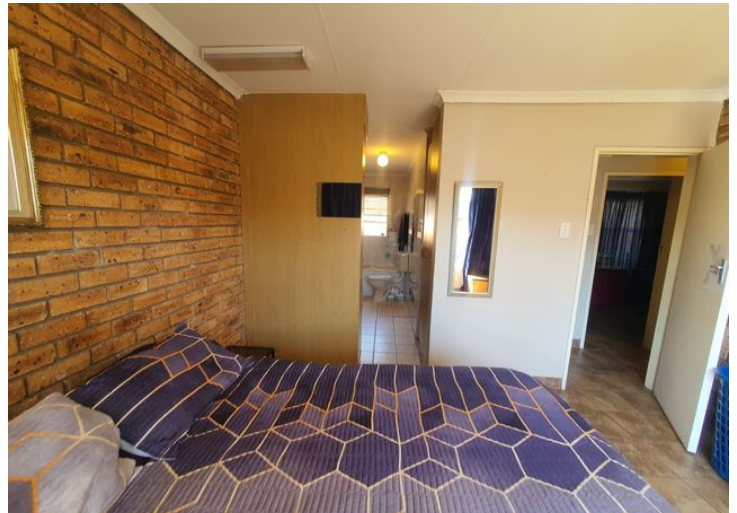
R25,220.00

Transfer Costs

R32,749.00

Monthly Rates

R562



INTERIOR

Bedrooms	3
Bathrooms	2
Kitchens	1
Recep. Rooms	1
Furnished	Yes

EXTERIOR

Carports / Parkings	1
Security	Yes
Dom. Accom.	0
Pool	Yes
Views	Yes

SIZES

Floor Size	111m ²
Land Size	140m ²



Alf Prinsloo

Property Practitioner

Registered with PPRA (FFC 2023326287)

082 497 5435

alfjoeye@lantic.net



Joey Prinsloo

Property Practitioner

Registered with PPRA (FFC 2023326275)

084 602 8836

joey@finehome.co.za