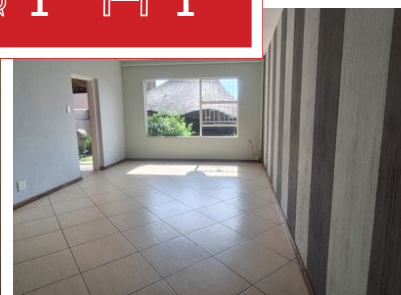
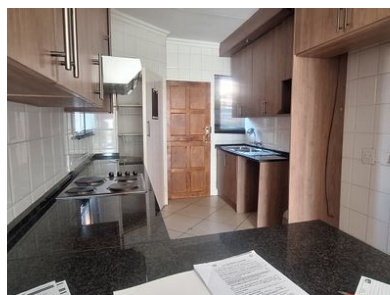


2 1 1



You will have it all, call now .

This face brick two bedroom townhouse, situated in Rangeview will surprise you with all the comfort you will experience here. It's a Pet friendly unit, even your furry friend will be enjoying this comfort. You will be able to entertain friend and family here with the comfort of a big home at a much smaller expense. This townhouse of yours have a jacuzzi and a Lapa for relaxing and entertaining. The open plan living area flowing through to the modern kitchen will be enjoyed in winter with the morning sun shining through the window. The two bedrooms are spacious and tiled and have ample cupboard space. You will be having the comfort of a full bathroom with a shower and a bath, to enjoy after a long day just to relax.

Outdoors is a living and entertainment area to enjoy in winter and summer times with the patio with your own private jacuzzi. The Lapa has a build in braai with a counter area and ample space to put a patio set to entertain friends and family. You also have a lock-up garage for one car. If you need additional storage there is a store room to meet your needs. For watering the garden there is a water tank with a gutter harvesting system. You will have it all, at a much lesser price

Monthly Bond Repayment

Calculated over 20 years at 11%
with no deposit.

R8,773.60

Bond Costs

These calculations are only a guide. Please ask
your conveyancer for exact calculations

R21,450.00

Transfer Costs

R28,244.00

Monthly Rates

R950



INTERIOR

| | |
|--------------|-----|
| Bedrooms | 2 |
| Bathrooms | 1 |
| Kitchens | 1 |
| Recep. Rooms | 1 |
| Furnished | Yes |

EXTERIOR

| | |
|---------------------|-----|
| Carports / Parkings | 1 |
| Security | Yes |
| Dom. Accom. | 0 |
| Pool | Yes |
| Views | Yes |

SIZES

| | |
|------------|-------------------|
| Floor Size | 89m ² |
| Land Size | 120m ² |



Hanlie Eksteen
Agent
082 335 3268
hanlie@finehome.co.za

