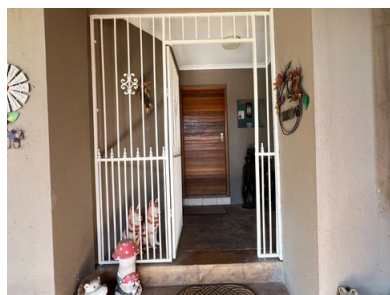




4 2 2



## 4 bedroom Family home with a pool

Nestled in the popular Rangeview Ext 4, this neat and spacious home is ideal for comfortable family living with the added bonus of rental or work-from-home potential.

It offers four well-sized bedrooms, two bathrooms (including a main en-suite), two lounges, and a practical kitchen that suits everyday needs.

The inviting front garden, sparkling swimming pool, and lapa with built-in braai create the perfect space for entertaining.

Additional features include a double garage, staff quarters, and a separate studio that can easily be used as a flatlet or home office.

Whether you're looking for space for the whole family or an investment opportunity, this property offers great value.

### Monthly Bond Repayment

Calculated over 20 years at 10.75% with no deposit.

R21,319.81

### Bond Costs

These calculations are only a guide. Please ask your conveyancer for exact calculations

R34,625.00

### Transfer Costs

R83,947.00

### Monthly Rates

R2,394





## INTERIOR

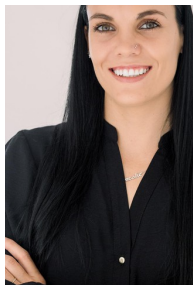
Bedrooms 4  
Bathrooms 2  
Kitchens 1  
Recep. Rooms 3  
Furnished Maybe

## EXTERIOR

Carports / Parkings 1  
Security Yes  
Dom. Accom. 0  
Pool Yes  
Views Maybe

## SIZES

Floor Size 347m<sup>2</sup>  
Land Size 925m<sup>2</sup>



**Berneshe Swanepoel**  
Agent

Registered with PPRA (FFC 1264295)

**071 188 5892**

berneshe@finehome.co.za

