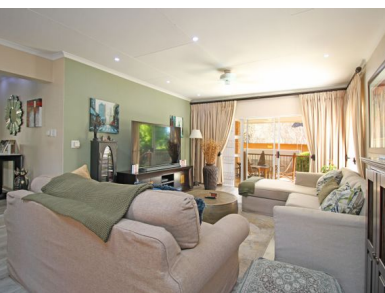




3 2 2



A Rare Gem with Abundant Natural Light

Step into this stunning property, where every corner radiates warmth and charm. Upon entering, you'll be welcomed by a spacious open-plan lounge and dining area that flows seamlessly onto a tiled patio, complete with a built-in braai—perfect for entertaining.

The well-appointed kitchen features granite countertops, ample space for all your appliances, and an ergonomic layout to make cooking a pleasure. For added convenience, a separate study offers the perfect spot for work or quiet moments.

This home boasts three generously sized bedrooms and two 21st century bathrooms. The manageable, pet-friendly garden exudes character, offering a quirky and unique outdoor retreat.

Additional highlights include:

- A double automated garage with direct access to the house

Monthly Bond Repayment

Calculated over 20 years at 10.75% with no deposit.

R21,319.81

Bond Costs

These calculations are only a guide. Please ask your conveyancer for exact calculations

R34,625.00

Transfer Costs

R83,947.00

Monthly Rates

R1,148



INTERIOR

Bedrooms	3
Bathrooms	2
Kitchens	1
Recep. Rooms	2
Furnished	Yes

EXTERIOR

Carports / Parkings	2
Security	Yes
Dom. Accom.	0
Pool	Yes
Views	Yes

SIZES

Floor Size	-
Land Size	568m ²



Henry O'Dell
Property Practitioner

082 411 9434
henry@finehome.co.za



Hesda Marais
Property Practitioner

Registered with PPRA (FFC 2023330774)

084 794 7571
hesda@finehome.co.za

