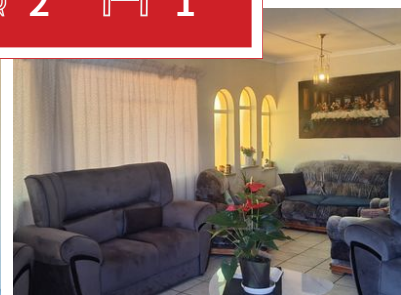
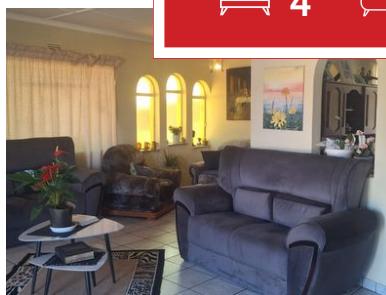
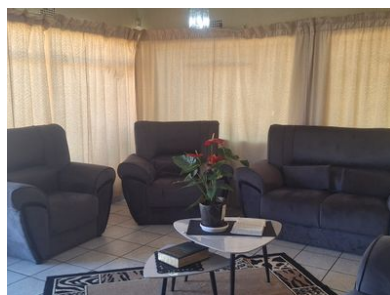




4 2 1



A real family home, for a real family.

This spacious family home offers a comfortable living and has a practical layout for everyday living. Walking in from the sunny stoop into a spacious lounge and dining room that is separate for those special family times that is more formal to sit around the table to share memorable stories. The kitchen flows from here, with ample cupboard space available, you have a separate laundry area for comfort and convenience. The four generously sized bedrooms offer every one in the family their privacy. The main bedroom has an En suite, the other bathroom are there for the families use. If you are working from home there is a large study also have the potential to be turned into a Fifth bedroom.

The covered patio leads directly from the kitchen, creating an ideal space for entertaining or a place to unwind after a long day at the office. Additional to your family home includes the following an outside room, staff toilet, a store room and a double shade net carport. This home will meet your needs, it's practical, comfortable for a family to stay here and grow old together with many happy memories. If you are looking for a family home, this might just be the one.

Monthly Bond Repayment

Calculated over 20 years at 10.75% with no deposit.

R14,720.82

Bond Costs

These calculations are only a guide. Please ask your conveyancer for exact calculations

R28,990.00

Transfer Costs

R44,285.00

Monthly Rates

R850



INTERIOR

Bedrooms	4
Bathrooms	2
Kitchens	1
Recep. Rooms	2
Furnished	Yes

EXTERIOR

Carports / Parkings	3
Security	Yes
Dom. Accom.	1
Pool	Yes
Views	Yes

SIZES

Floor Size	240m ²
Land Size	729m ²



Hanlie Eksteen
Agent
082 335 3268
hanlie@finehome.co.za

