



3 2 1



## Family home with flatlet and solar panels for sale in monument

For sale in Monument – a spacious and well-kept family home offering 3 bedrooms, 2 bathrooms, and a double garage.

Enjoy relaxed living with a swimming pool, lapa with built-in braai, and a pet-friendly yard.

The property includes a separate flatlet, ideal for guests or rental income, plus a storeroom and dedicated laundry room for extra convenience.

Equipped with solar panels, an inverter with backup batteries, and a JoJo tank, this home is energy-efficient and ready for any season.

A perfect blend of comfort and practicality in a great location!

### Monthly Bond Repayment

Calculated over 20 years at 10.75% with no deposit.

R17,157.37

### Bond Costs

These calculations are only a guide. Please ask your conveyancer for exact calculations

R30,875.00

### Transfer Costs

R54,439.00

### Monthly Rates

R1,500



## INTERIOR

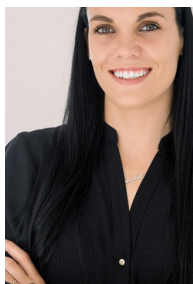
Bedrooms	3
Bathrooms	2
Kitchens	1
Recep. Rooms	2
Furnished	Yes

## EXTERIOR

Carports / Parkings	3
Security	Yes
Dom. Accom.	0
Pool	Yes
Views	Yes

## SIZES

Floor Size	180m <sup>2</sup>
Land Size	1,127m <sup>2</sup>



**Berneshe Swanepoel**  
Agent

Registered with PPRA (FFC 1264295)

**071 188 5892**

berneshe@finehome.co.za