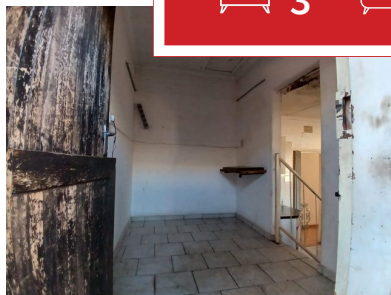




3 2 1



Versatile Dual-Living Home on Expansive Corner Stand

Discover timeless character and outstanding potential with this spacious corner property—perfect for families, investors, or those seeking flexible living options.

The main residence features:

Two manually operated garages

A generous kitchen with walk-in access, flowing into a spacious dining area—ideal for family meals and entertaining

A warm and inviting lounge with a cozy fireplace and patio access for indoor-outdoor living

A separate study and ample built-in cupboards for convenient storage

Three well-sized bedrooms, all fitted with built-in wardrobes

The main bedroom includes a private en-suite bathroom with bath, basin, and toilet

A full second bathroom with shower, bath, basin, and toilet

Don't miss this opportunity—contact us today to book your private viewing!

Monthly Bond Repayment	R8,629.45	Bond Costs	R21,450.00
Calculated over 20 years at 10.75% with no deposit.		These calculations are only a guide. Please ask your conveyancer for exact calculations	
Transfer Costs	R28,244.00	Monthly Rates	R1,308



INTERIOR

Bedrooms	3
Bathrooms	2
Kitchens	1
Recep. Rooms	2
Furnished	Yes

EXTERIOR

Carports / Parkings	1
Security	Yes
Dom. Accom.	0
Pool	Yes
Views	Yes

SIZES

Floor Size	-
Land Size	-



CHABI MAOBA
Agent
065 563 0210
chabi@finehome.co.za

