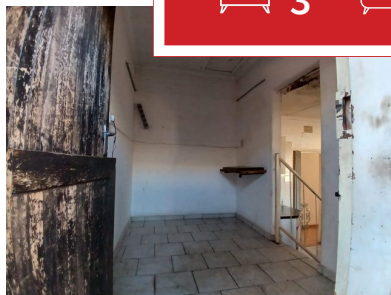




3 2 1



## Versatile Dual-Living Home on Expansive Corner Stand

Discover timeless character and outstanding potential with this spacious corner property—perfect for families, investors, or those seeking flexible living options.

The main residence features:

Two manually operated garages

A generous kitchen with walk-in access, flowing into a spacious dining area—ideal for family meals and entertaining

A warm and inviting lounge with a cozy fireplace and patio access for indoor-outdoor living

A separate study and ample built-in cupboards for convenient storage

Three well-sized bedrooms, all fitted with built-in wardrobes

The main bedroom includes a private en-suite bathroom with bath, basin, and toilet

A full second bathroom with shower, bath, basin, and toilet

Don't miss this opportunity—contact us today to book your private viewing!

---

<b>Monthly Bond Repayment</b>	R8,629.45	<b>Bond Costs</b>	R21,450.00
Calculated over 20 years at 10.75% with no deposit.		These calculations are only a guide. Please ask your conveyancer for exact calculations	
<b>Transfer Costs</b>	R28,244.00	<b>Monthly Rates</b>	R1,308



## INTERIOR

Bedrooms	3
Bathrooms	2
Kitchens	1
Recep. Rooms	2
Furnished	Maybe

## EXTERIOR

Carports / Parkings	1
Security	Yes
Dom. Accom.	0
Pool	Yes
Views	Maybe

## SIZES

Floor Size	-
Land Size	-



**CHABI MAOBA**

Agent

**065 563 0210**

chabi@finehome.co.za