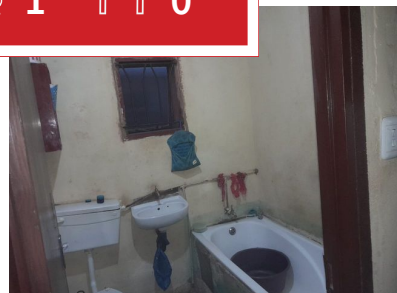
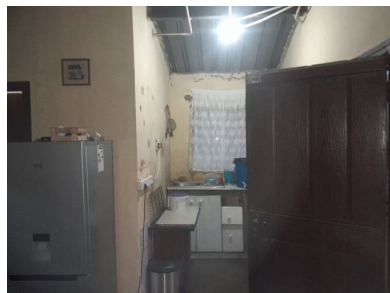




2 1 0



RDP House for Sale in Riet Vallie, Swaneville

This charming RDP home features 2 bedrooms, 1 bathroom, and an open-plan kitchen and lounge. It offers a massive yard—perfect for building additional rooms as an investment or extending the house into a spacious family home.

Don't miss this opportunity—book your viewing appointment today!

Monthly Bond Repayment

Calculated over 20 years at 11%
with no deposit.

R2,683.69

Bond Costs

These calculations are only a guide. Please ask
your conveyancer for exact calculations

R10,985.00

Transfer Costs

R15,517.00

Monthly Rates

R560



INTERIOR

Bedrooms	2
Bathrooms	1
Kitchens	1
Recep. Rooms	1
Furnished	Yes

EXTERIOR

Carports / Parkings	0
Security	Yes
Dom. Accom.	0
Pool	Yes
Views	Yes

SIZES

Floor Size	-
Land Size	270m ²



Alfred Tshakane

Agent

063 062 4391

alfred@finehome.co.za