



## New Listing! Lovely loose standing signgle floor House in secure complex

This cluster home is well situated within this security complex witha guardhouse in Chancliff Ridge upmarket area.

It consist of two Reception areas, two sunny bedrooms, two modern bathrooms and two garages.  
There are laminated flooring throughout and upmarket tiles,

The granite top kitchen with a nook and lots of built in cupboards, is open plan and links to the Lounge/Dining room area which leads to the landscaped garden and verandah area.

There are two automated garages and the Complex has a guardhouse and are fully walled.

The complex is pet friendly and levies are affordable.

### Monthly Bond Repayment

Calculated over 20 years at 10.75%  
with no deposit.

R17,512.70

### Bond Costs

These calculations are only a guide. Please ask  
your conveyancer for exact calculations

R30,875.00

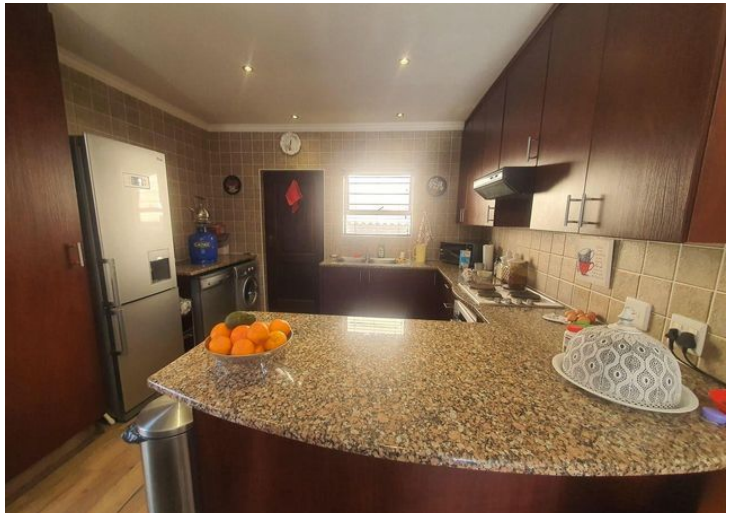
### Transfer Costs

R56,539.00

### Monthly Rates

R1,425





### INTERIOR

Bedrooms	2
Bathrooms	2
Kitchens	1
Recep. Rooms	0
Furnished	Yes

### EXTERIOR

Carports / Parkings	0
Security	Maybe
Dom. Accom.	0
Pool	Yes
Views	Maybe

### SIZES

Floor Size	-
Land Size	-



**Alf Prinsloo**

Property Practitioner

Registered with PPRA (FFC 2023326287)

**082 497 5435**

alfjoeye@lantic.net



**Joey Prinsloo**

Property Practitioner

Registered with PPRA (FFC 2023326275)

**084 602 8836**

joey@finehome.co.za

