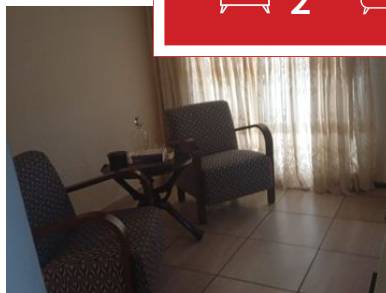
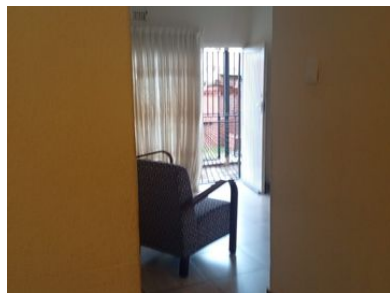
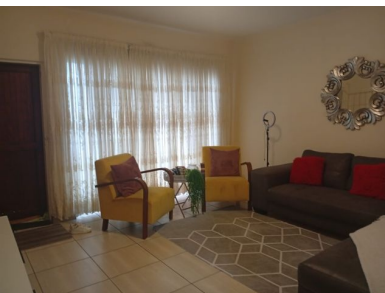




2 1 0



2 Bedroom Sectional Title for Sale - Southdale Gardens, West Turffontein

This well-maintained 2-bedroom apartment, located in a secure complex in Southdale, West Turffontein, offers generous living space and exceptional convenience for families, professionals, or investors.

Both bedrooms are sizable, providing ample storage and comfort. The layout includes a spacious living area that can easily accommodate a lounge and dining setup, making it ideal for relaxed living or entertaining.

The kitchen is functional and neatly fitted, with room for essential appliances and practical storage solutions.

This unit is perfectly situated within the complex and offers:

Secure access and peace of mind

480 m to Southdale Shopping Centre

1.07 km to Lanston Corner

2.04 km to Ormonde Shopping Centre

Education

100 m to Southdale Gardens

300 m to Sparkles Nursery School

Monthly Bond Repayment	R5,583.76	Bond Costs	R15,795.00
Calculated over 20 years at 10.75% with no deposit.		These calculations are only a guide. Please ask your conveyancer for exact calculations	
Transfer Costs	R21,217.00	Monthly Rates	-



INTERIOR

Bedrooms	2
Bathrooms	1
Kitchens	1
Recep. Rooms	2
Furnished	Yes

EXTERIOR

Carports / Parkings	1
Security	Yes
Dom. Accom.	0
Pool	Yes
Views	Yes

SIZES

Floor Size	84m ²
Land Size	12,644m ²



Colleen Adams
Agent
072 484 2271
colleen@finehome.co.za

