



## TWO BEDROOM APARTMENT IN THE HEART OF THE CBD IDEAL FOR STUDENTS OR INVESTORS

LOVELY TWO BEDROOM APARTMENT IN THE HEART OF JOHANNESBURG CBD , CLOSE TO VODACOM FLAT , JUST WITHIN WALKING DISTANCE TO COLLEGES , AND UNIVERSITIES , EASY EXCESS TO REA VAYA , TAXIS AND METRO BUS. VERY CLOSE TO SCHOOLS AND HOSPITALS AND OTHER AMENITIES .

THIS LOVELY FLAT IS WELL MAINTAINED AND TAKEN CARED OF IIT HAS TWO BEDROOMS , THE 2ND BEDROOM IS A CONVERTED BALCONY , NEEDS A LITTLE BIT OF TLC THAT IS NOTHING MORE THAN A PAINT AND A BRUSH WORK

### Monthly Bond Repayment

Calculated over 20 years at 10.5%  
with no deposit.

R3,494.33

### Bond Costs

These calculations are only a guide. Please ask  
your conveyancer for exact calculations

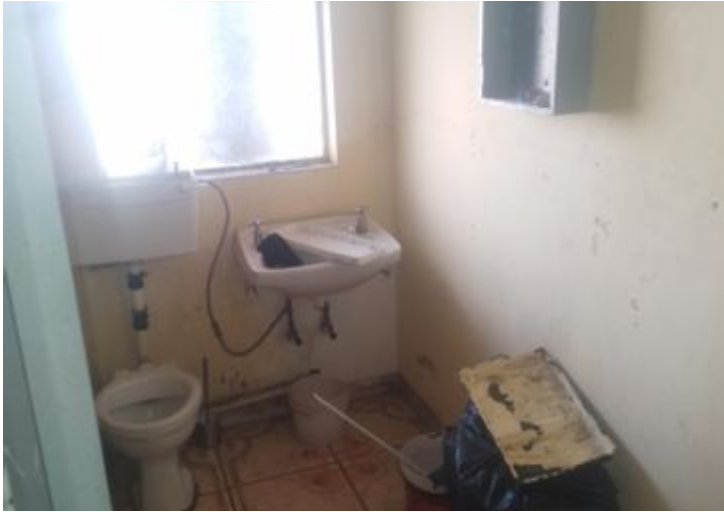
R11,560.00

### Transfer Costs

R16,402.00

### Monthly Rates

-



### INTERIOR

|              |     |
|--------------|-----|
| Bedrooms     | 1.5 |
| Bathrooms    | 1   |
| Kitchens     | 1   |
| Recep. Rooms | 1   |
| Furnished    | Yes |

### EXTERIOR

|                     |     |
|---------------------|-----|
| Carports / Parkings | 1   |
| Security            | Yes |
| Dom. Accom.         | 0   |
| Pool                | Yes |
| Views               | Yes |

### SIZES

|            |   |
|------------|---|
| Floor Size | - |
| Land Size  | - |



Lucky Tshabalala  
Agent

074 326 4719  
lucky@finehome.co.za

