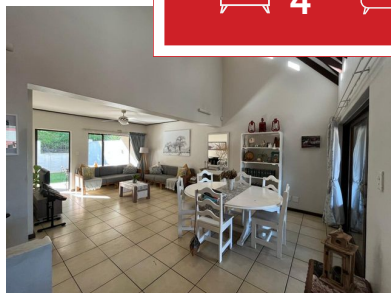
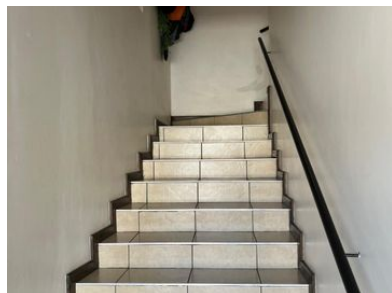
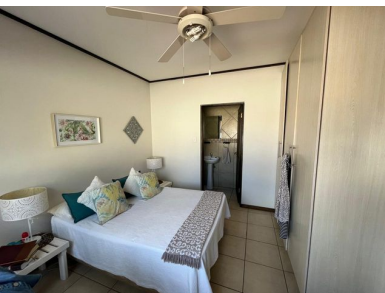




4 3 2



A SUPRISING DOUBLE STOREY FOUR BEDROOM TOWN HOUSE.

For first time buyers or those who love tranquillity, space and nature, this is a must buy. Strategically situated on the upper level, for the open minded and adventurous who prefer single level living, is an open plan kitchen, dining- and living area, sporting large windows allowing for a bright and open atmosphere with abundant natural light.

Stepping out of the living area onto the balcony which provides a seamless extension of the living space, this outdoor haven is a perfect retreat for residents to connect with nature and enjoy the outdoors offering tranquillity as you explore the raised garden on this level.

The thoughtful layout of this double storey townhouse caters to the diverse needs of its residents, offering a harmonious blend of privacy, communal spaces and modern conveniences. Not only does this intrigued change in architectural design, and planning of the property, enhance the sense of space, but also provide picturesque views of the surrounding area.

Monthly Bond Repayment

Calculated over 20 years at 10.75% with no deposit.

R20,050.77

Bond Costs

These calculations are only a guide. Please ask your conveyancer for exact calculations

R32,760.00

Transfer Costs

R73,706.00

Monthly Rates

R1,000



INTERIOR

Bedrooms	4
Bathrooms	3
Kitchens	1
Recep. Rooms	2
Furnished	Yes

EXTERIOR

Carports / Parkings	2
Security	Yes
Dom. Accom.	0
Pool	Yes
Views	Yes

SIZES

Floor Size	225m ²
Land Size	420m ²



Sulet Human

Office Manager

084 584 1407

sulet.human@finehome.co.za



Conrad Thiar

Broker Manager

083 226 3244

conrad@finehome.co.za