



5 4.5 2



Stunning 5 Bedroom Thatch Roof Family Home in Secure Estate.

This spacious and beautifully designed thatch-roof home offers the perfect blend of modern luxury and rustic charm. Situated in a sought-after estate, this property is ideal for families who love space, comfort, and entertaining.

Property Features:

- 5 Spacious Bedrooms – Each with elegant sleeper-built cupboards
- 4 Half Bathrooms – Conveniently located throughout the home
- Modern Kitchen – Featuring sleek built-in cupboards and a separate laundry/scullery
- Walk-In Closet – Spacious and well-designed in the main bedroom
- Living & Dining Areas – Open-plan and perfect for family gatherings
- Study / Domestic Room – Versatile for work-from-home or staff accommodation
- Double Garage & 2 Carports – Providing ample parking space

Monthly Bond Repayment

Calculated over 20 years at 10.75% with no deposit.

R32,436.57

Bond Costs

These calculations are only a guide. Please ask your conveyancer for exact calculations

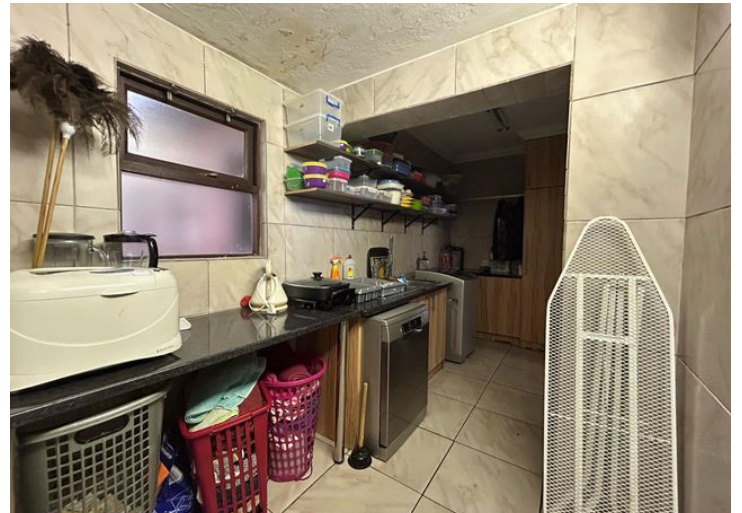
R44,070.00

Transfer Costs

R183,829.00

Monthly Rates

R1,100



INTERIOR

Bedrooms	5
Bathrooms	4.5
Kitchens	1
Recep. Rooms	2
Furnished	Yes

EXTERIOR

Carports / Parkings	6
Security	Yes
Dom. Accom.	0
Pool	Yes
Views	Yes

SIZES

Floor Size	321m ²
Land Size	871m ²



Sulet Human

Office Manager

084 584 1407

sulet.human@finehome.co.za



Conrad Thiar

Broker Manager

083 226 3244

conrad@finehome.co.za