



Are you looking for a striking move-in ready opulent home?

Come and meet your exquisite priced-to-sell family sanctuary.

Discover unparalleled luxury in this exquisite 5-bedroom residence, designed to impress and crafted for comfort. Ascend the double foyer one-of-a-kind corridor to three sumptuous ensuite bedrooms, including a master suite with a walk-in wardrobe, sauna shower, and a serene pajama lounge. Each room opens to a grand balcony, offering splendid views. The ground floor features a private lounge, sophisticated dining room, rec room, study and a modern custom-built kitchen with granite countertops.

The wood-burning fireplace not only brings all the elements together with warmth and happiness but also creates a homey feeling like no other. A connected flatlet offers a private kitchen, TV room, two bedrooms, and a bathroom, ideal for guests or extended family. The attention to detail is breathtaking.

Outside, indulge in the upgraded garden, dip in the sparkling swimming pool, and enjoy ample parking with a 3-car

Monthly Bond Repayment

Calculated over 20 years at 10.75% with no deposit.

R48,527.94

Bond Costs

These calculations are only a guide. Please ask your conveyancer for exact calculations

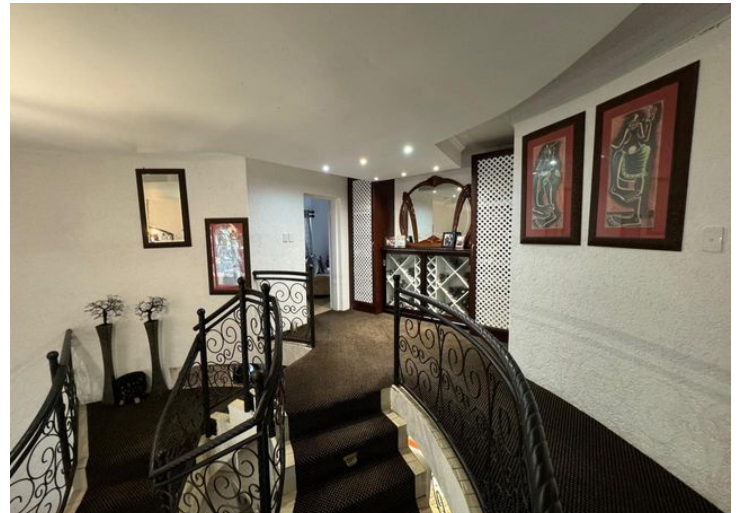
R59,150.00

Transfer Costs

R375,977.00

Monthly Rates

R1,200



INTERIOR

Bedrooms	5
Bathrooms	4.5
Kitchens	2
Recep. Rooms	3
Furnished	Yes

EXTERIOR

Carports / Parkings	0
Security	Yes
Dom. Accom.	0
Pool	Yes
Views	Yes

SIZES

Floor Size	509m ²
Land Size	1,205m ²



Sulet Human

Office Manager

084 584 1407

sulet.human@finehome.co.za



Conrad Thiar

Broker Manager

083 226 3244

conrad@finehome.co.za