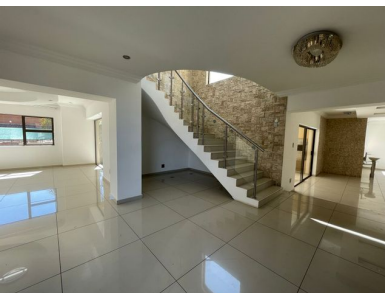


4 4 3



A beautiful spacious modern four bedroom family home.

Looking for a four bedroom property in one of our exclusive estates in Hartbeespoort?

Then this property is ideal for you and your family. This property is offering four bedrooms and four bathrooms, a guest bedroom downstairs and the other three bedrooms upstairs, taking you out on a big balcony overlooking the beautiful mountain views.

A big plus, this property has a low maintenance yard that is extremely convenient.

The estate is also offering a fully equipped gym, tennis court and squash court.

Call for a viewing today.

Monthly Bond Repayment

Calculated over 20 years at 10.75% with no deposit.

R44,263.98

Bond Costs

These calculations are only a guide. Please ask your conveyancer for exact calculations

R55,380.00

Transfer Costs

R325,441.00

Monthly Rates

R1,600



INTERIOR

Bedrooms	4
Bathrooms	4
Kitchens	1
Recep. Rooms	3
Furnished	Yes

EXTERIOR

Carports / Parkings	0
Security	Yes
Dom. Accom.	0
Pool	Yes
Views	Yes

SIZES

Floor Size	590m ²
Land Size	989m ²



Sulet Human

Office Manager

084 584 1407

sulet.human@finehome.co.za



Conrad Thiar

Broker Manager

083 226 3244

conrad@finehome.co.za