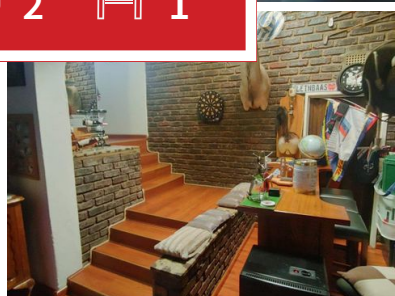
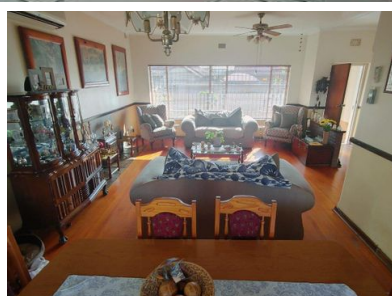


3 2 1



## Your new home awaits you!

This Stunning home is located in the leafy area of Brenthurst offer, 3 Bedrooms with built in cupboards., 2 Bathrooms (which one is on-suite), Open plan lounge and dining area, TV room with built in braai, Kitchen with ample cupboard space. Own entrance with lots of parking and single garage.

Lapa that overlooks sparkling blue pool. Flatlet offer, 2 Bedrooms with built in cupboards, Bathroom with separate toilet, Open plan kitchen and lounge area. Own entrance with double carports. This home offers very good security. This home is located close to schools and amenities.

Don't delay call us today!!

### Monthly Bond Repayment

Calculated over 20 years at 10.75% with no deposit.

R19,086.30

### Bond Costs

These calculations are only a guide. Please ask your conveyancer for exact calculations

R32,760.00

### Transfer Costs

R68,006.00

### Monthly Rates

R1,248



## INTERIOR

Bedrooms	3
Bathrooms	2
Kitchens	1
Recep. Rooms	3
Furnished	Maybe

## EXTERIOR

Carports / Parkings	10
Security	Yes
Dom. Accom.	0
Pool	Yes
Views	Maybe

## SIZES

Floor Size	229m <sup>2</sup>
Land Size	840m <sup>2</sup>



**Lizette Kilian**

Agent

**+27748664229**

thyscampersprings1@gmail.com