

R85 per m²

191m² Warehouse To Let in Laser
Park

Web Ref: FHC59



Ignatius Marthinus Hattingh

Agent

Registered with PPRA (FFC 1236045)

082 416 9317

naas.hattingh@finehome.co.za

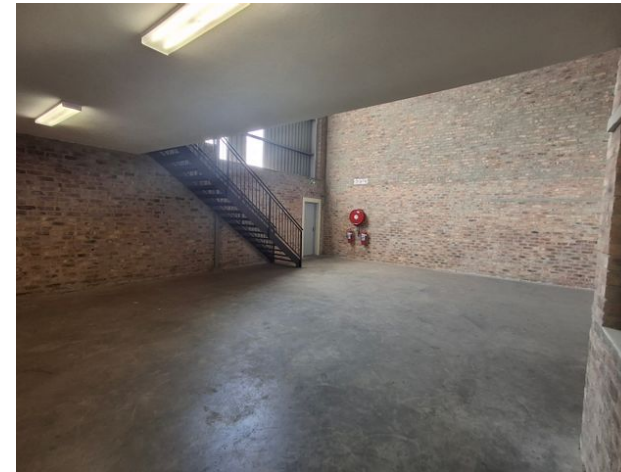


Neat industrial unit to let in Laser Park

Neat unit in a secure industrial park in Laser Park

On offer is a neat industrial unit in the very popular Cradleview Industrial Park in Laser Park. The unit which measures 191 m² in size offers great height to the eaves measuring at 8 m. Access to the unit is gained through a 6 m high roller shutter and separate staff door. The unit features a reception, staff ablutions and a small kitchenette on the ground floor. There is an open mezzanine level featuring a toilet and basin. The rest of the area can easily be converted to offices. The unit boasts three phase electricity which makes it ideal for light manufacturing or warehousing. The unit has parking in the front as well as additional park parking area.

The park has excellent security with 24-hour access control. The park which is centrally located to all arterial routes has spacious driveways allowing easy access for delivery. Mini units of this size are scarce so do not hesitate to make contact to secure this gem



Monthly Rates

R1 Excl. VAT

Zoning

Industrial

Exterior

Security

No

Sizes

Floor Size

191m²

Land Size

-

