

R75 per m²

942m² Factory To Let in Laser
Park

9 Zeiss road

Web Ref: FHC66



Naas Hattingh

Agent

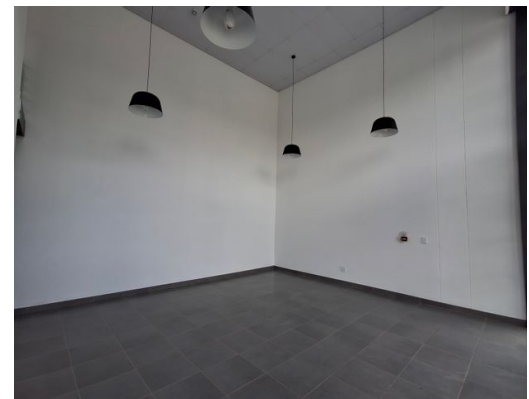
Registered with PPRA (FFC 1236045)

082 416 9317

naas.hattingh@finehome.co.za



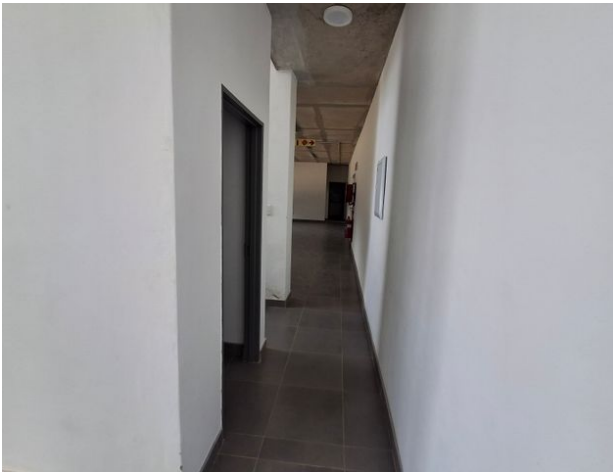
Web Ref: FHC66



www.finehome.co.za

Neat industrial unit to let in Laser Park

Brand new unit available in the secure Kimbuilt Industrial Park, located in Laser Park. This neat industrial unit measures 942m² and offers excellent height to the eaves at 8m. Access is provided through two 4.5m high roller shutters and a separate staff door. The unit features full staff ablutions on the ground floor, including a small kitchenette and office space. With three-phase electricity, this unit is ideal for light manufacturing or warehousing. Ample parking is available in the front, along with additional parking in the park area. The park boasts excellent security with 24-hour access control and patrolling guards. Centrally located to all arterial routes, the park has spacious driveways allowing easy access for deliveries. Units of this size are scarce, so don't hesitate to make contact to secure this gem.



Monthly Rates

R1 Excl. VAT

Zoning

Industrial

Exterior

Security No

Sizes

Floor Size 942m²

Land Size -

