

R64 per m²

280m² Warehouse To Let in
Strijdompark

1 Ferndale Industrial Park, 18 Lyn Rd

Web Ref: FHC83

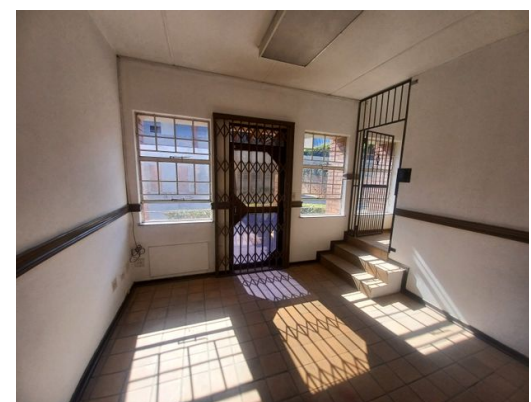


Thys Jacobs

Candidate Property Practitioner

082 699 1973

thys.jacobs@finehome.co.za



Neat unit To Let in Ferndale!!

On offer is a neat industrial mini unit in a secure industrial park in Strijdom Park. The unit which measures 280m2 in size offers great height to the eaves measuring at 6m. Access to the unit is gained through a 5m high roller shutter and the small office component, which is split between the ground and mezzanine level has its own separate entrance. The unit features full staff ablutions on the ground floor as well as a small kitchenette. The office component boasts a separate toilet on the ground floor as well as the mezzanine floor. The unit boasts three phase electricity which makes it ideal for light manufacturing or warehousing. The unit has ample parking in the front as well as overflow parking in the park. The park has excellent security with 24 hour access control as well as patrolling guards around the clock. The park which is centrally located to all arterial routes has spacious drive ways allowing easy access for delivery. Mini units of this size is scarce so do not hesitate to make contact in order to secure this gem



Monthly Rates

-

Zoning

Industrial

Exterior

Security No

Sizes

Floor Size 280m²

Land Size -

