

**R24,820 per m<sup>2</sup>**

332m<sup>2</sup> Warehouse To Let in  
Strijdompark

Web Ref: FHC70

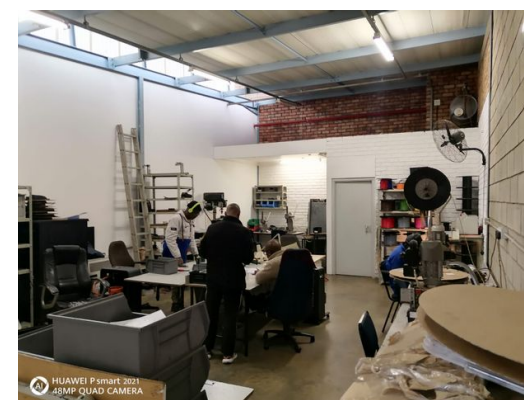
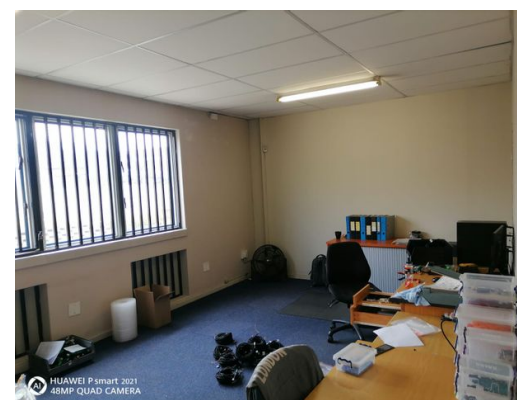


**Thys Jacobs**

Candidate Property Practitioner

**082 699 1973**

thys.jacobs@finehome.co.za



# Prime Space Available – Your Business Opportunity Starts Here!

On offer is a neat industrial mini unit in a secure industrial park in Strydompark. The unit which measures 332m2 in size offers great height to the eaves measuring at 6m. Access to the unit is gained through a 5m high roller shutter and the small office component, which is split between the ground and mezzanine level has its own separate entrance. The unit features full staff ablutions on the ground floor as well as a small kitchenette. The office component boasts a separate toilet on the ground floor as well as the mezzanine floor. The unit boasts three phase electricity which makes it ideal for light manufacturing or warehousing. The unit has ample parking in the front as well as overflow parking in the park. The park has excellent security with 24 hour access control as well as patrolling guards around the clock. The park which is centrally located to all arterial routes has spacious drive ways allowing easy access for delivery. Mini units of this size is scarce so do not hesitate to make contact in order to secure this gem



## Monthly Rates

-

## Zoning

Industrial

## Exterior

Security No

## Sizes

Floor Size 332m<sup>2</sup>

Land Size -

